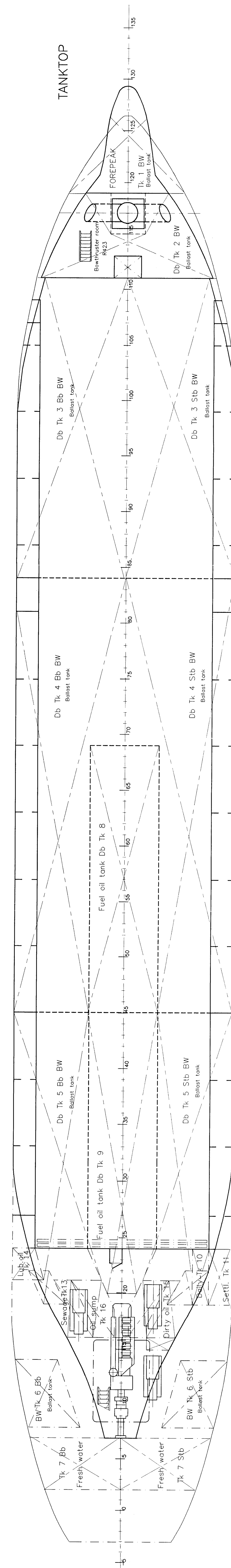
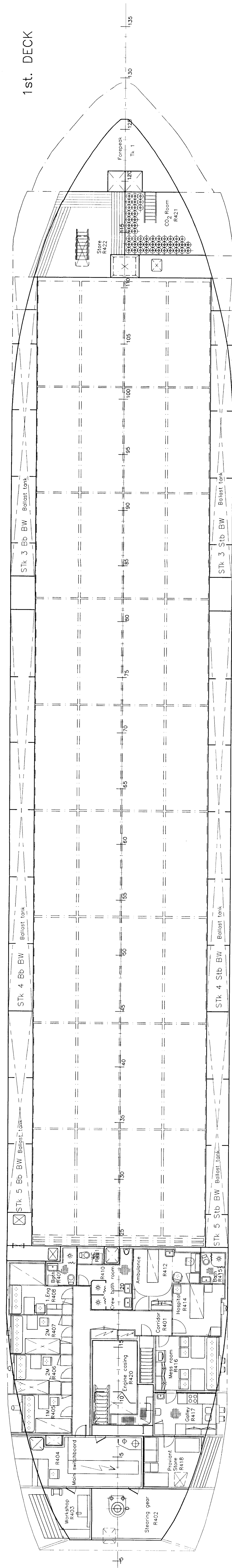
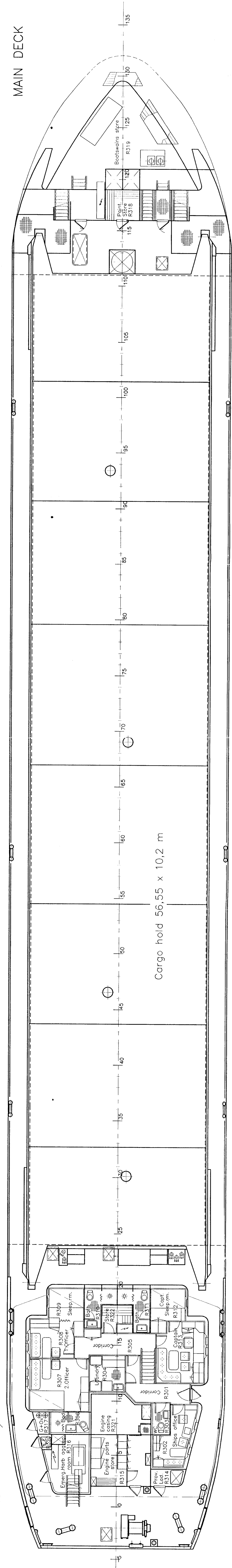
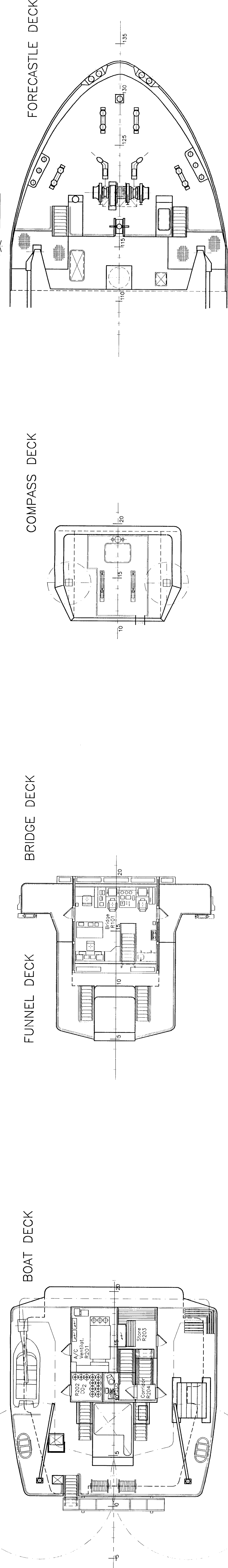


Figurant Light - Hx 15,27m
 Demontážna výška Mmax 14,60m



CARGO MOTOR SHIP
 2446 GT

MAIN DIMENSIONS

Length over all	87,90 m
Length betw. perp.	81,00 m
Breadth mid.	12,80 m
Depth to main deck	7,10 m
Depth to poop deck	8,00 m
Draught max. in sea water	5,49 m
Draught in ballast	D _A =3,65m
Height from the baseline	D _F =2,80 m
Main engine output	1500/900 kW
Speed by trial conditions	11,7 Kn
and 1500kW	11,7 Kn
Deadweight on draught D=5,49m	3680 tdw
Cargo hold capacity	4588 m ³
Containers in Cargo hold	108 TEU
Containers on hatch covers	36 TEU
Containers total	144 TEU



CLASS:
 GL 100 A5 "E" "G" * MC AUT "E"
 Equipped for carriage of containers
 Equipped for carriage of dangerous goods

SLOVENSKE LODENICE KOMARNO, o.s. 821 08 BRATISLAVA	
Scale: 1:1100	Date: 25.06.2001
Author: Ing. J. Hudcok	Checked: 31.05.1998
Project No.: 2949, 2950, 2951	Draw No.: 92-12/063-002-001/C49
Title: GENERALITY PLAN GENERAL ARRANGEMENT	Type: RHINE