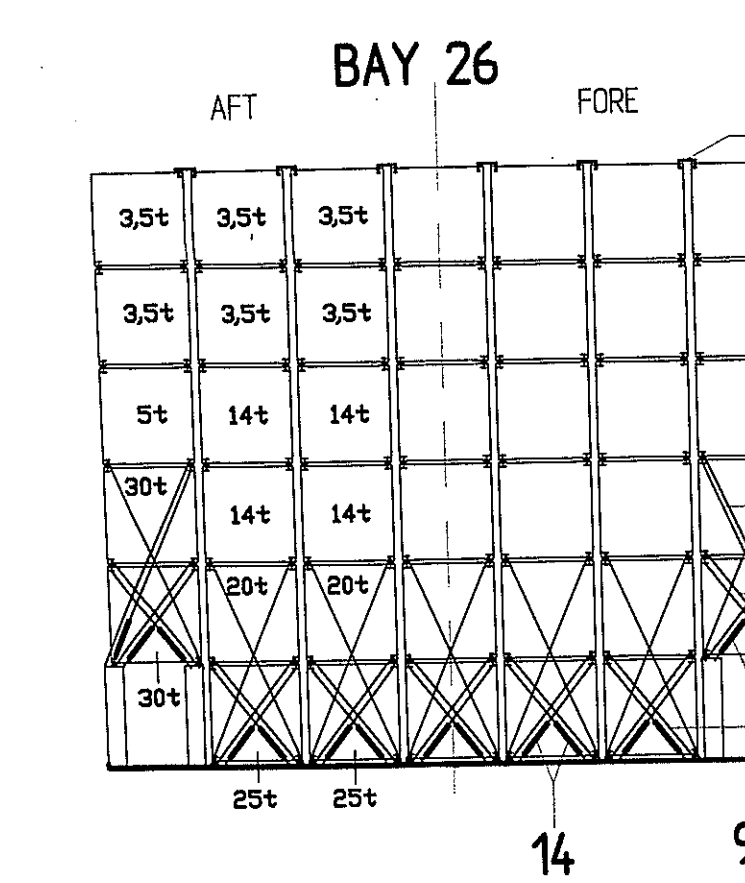
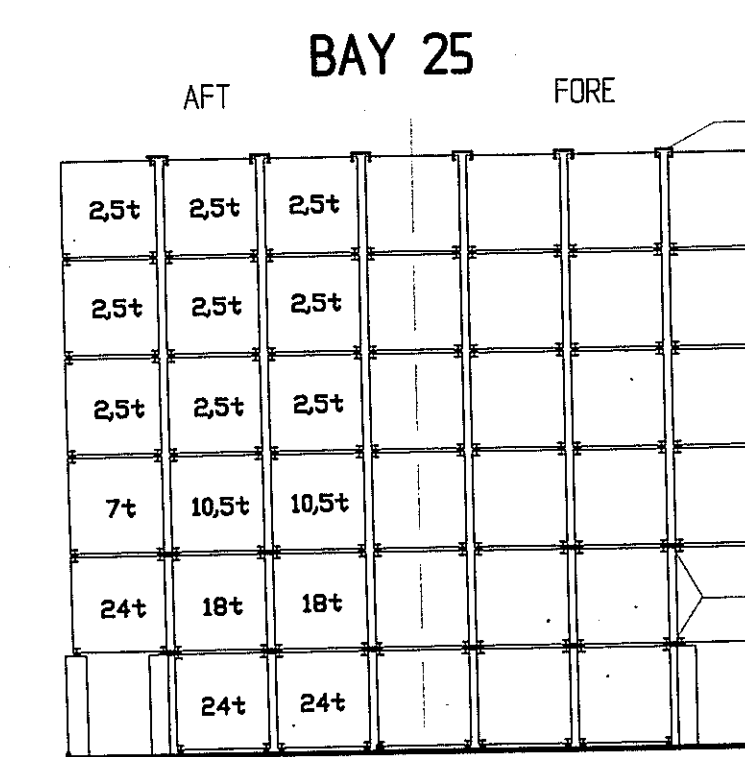
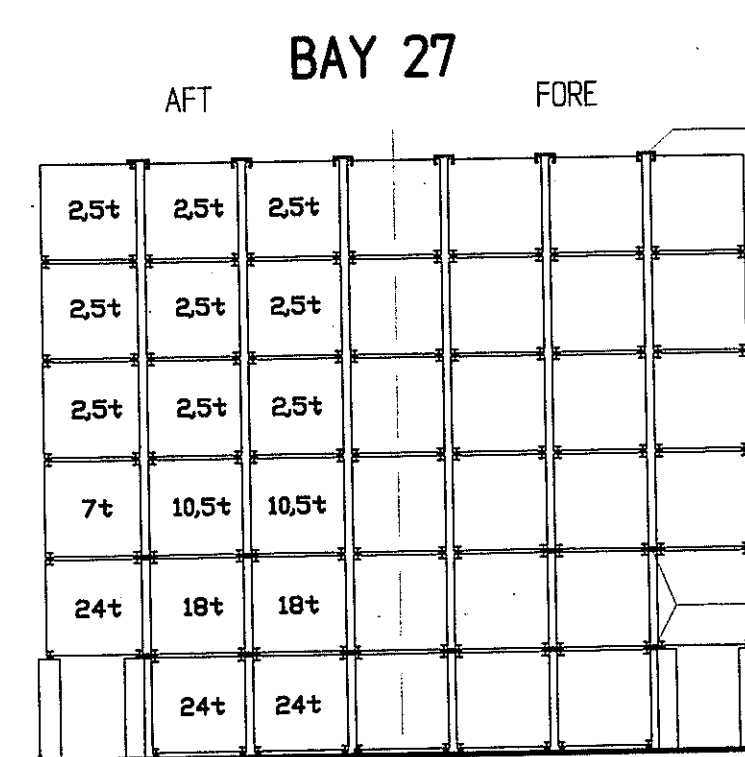
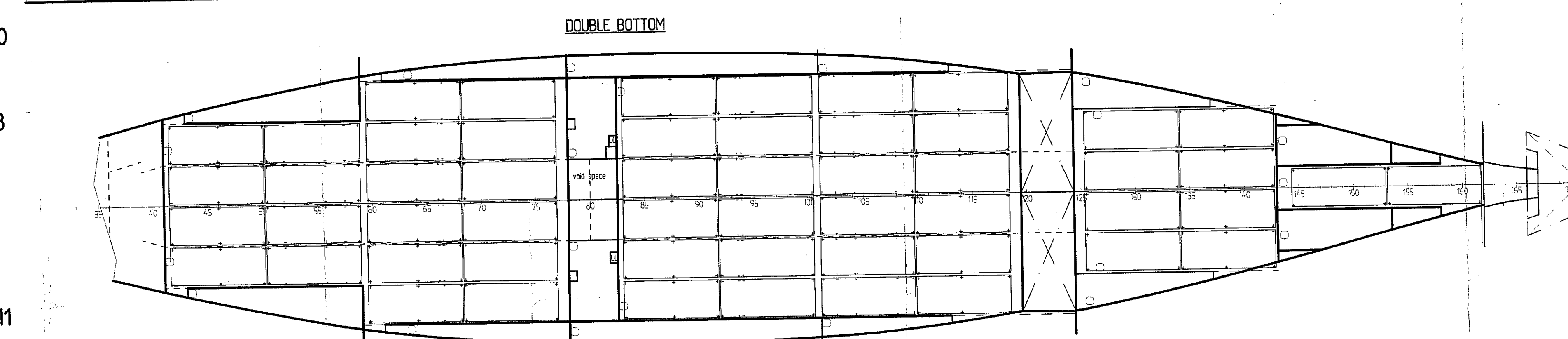
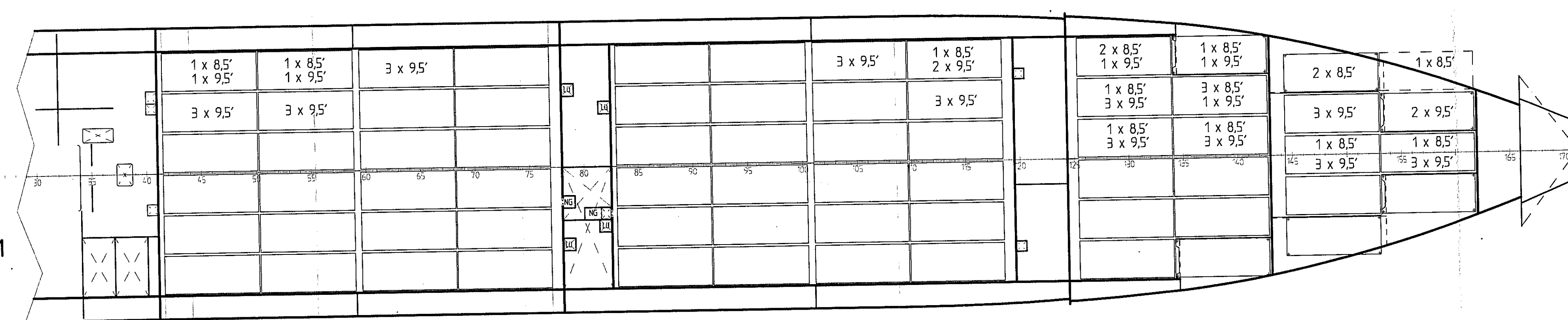


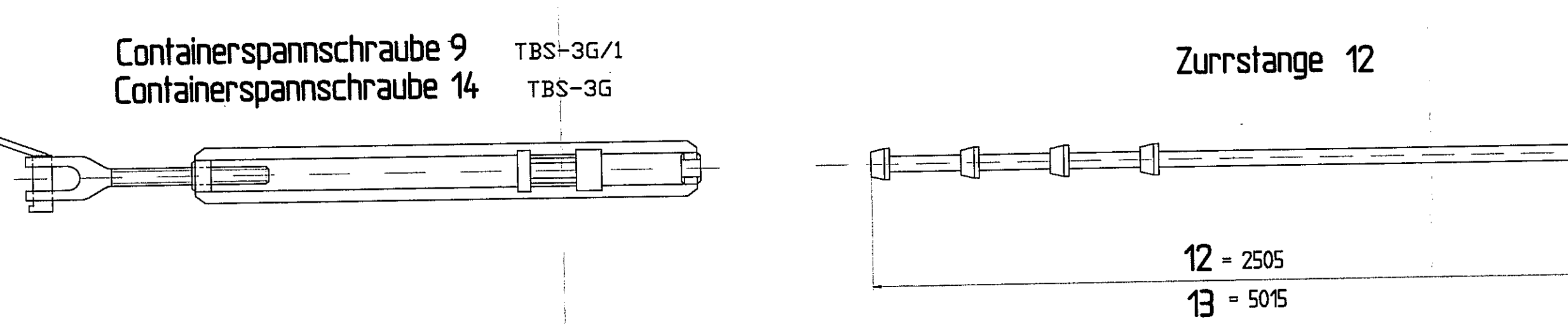
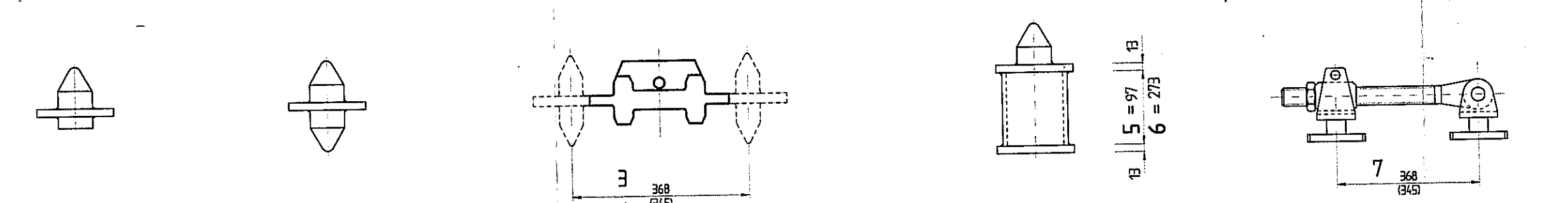
ROWS  
06 04 02 00 01 03 05



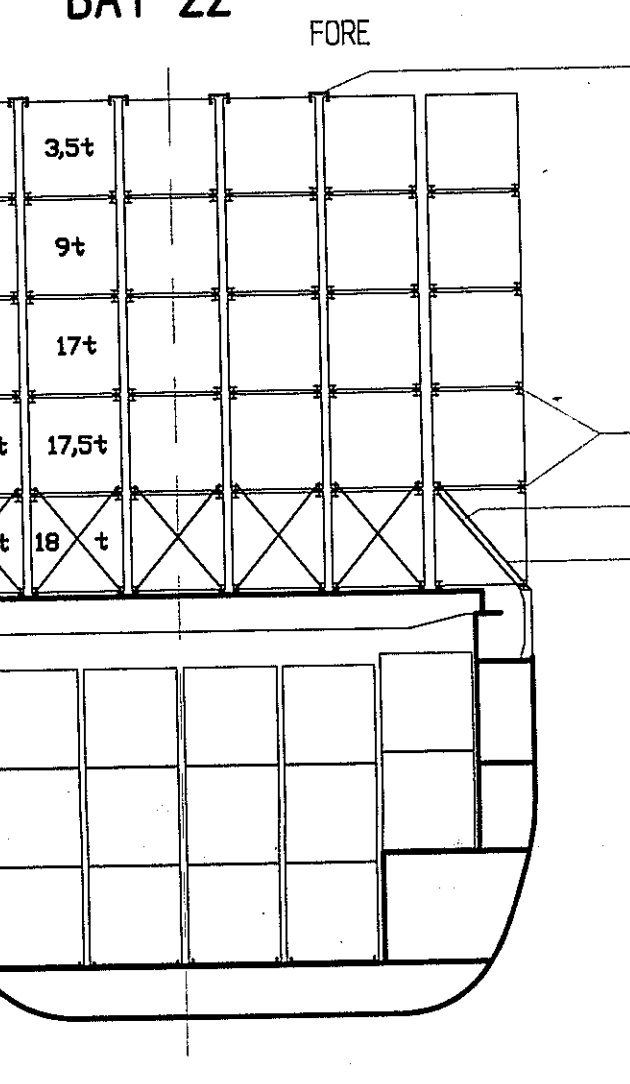
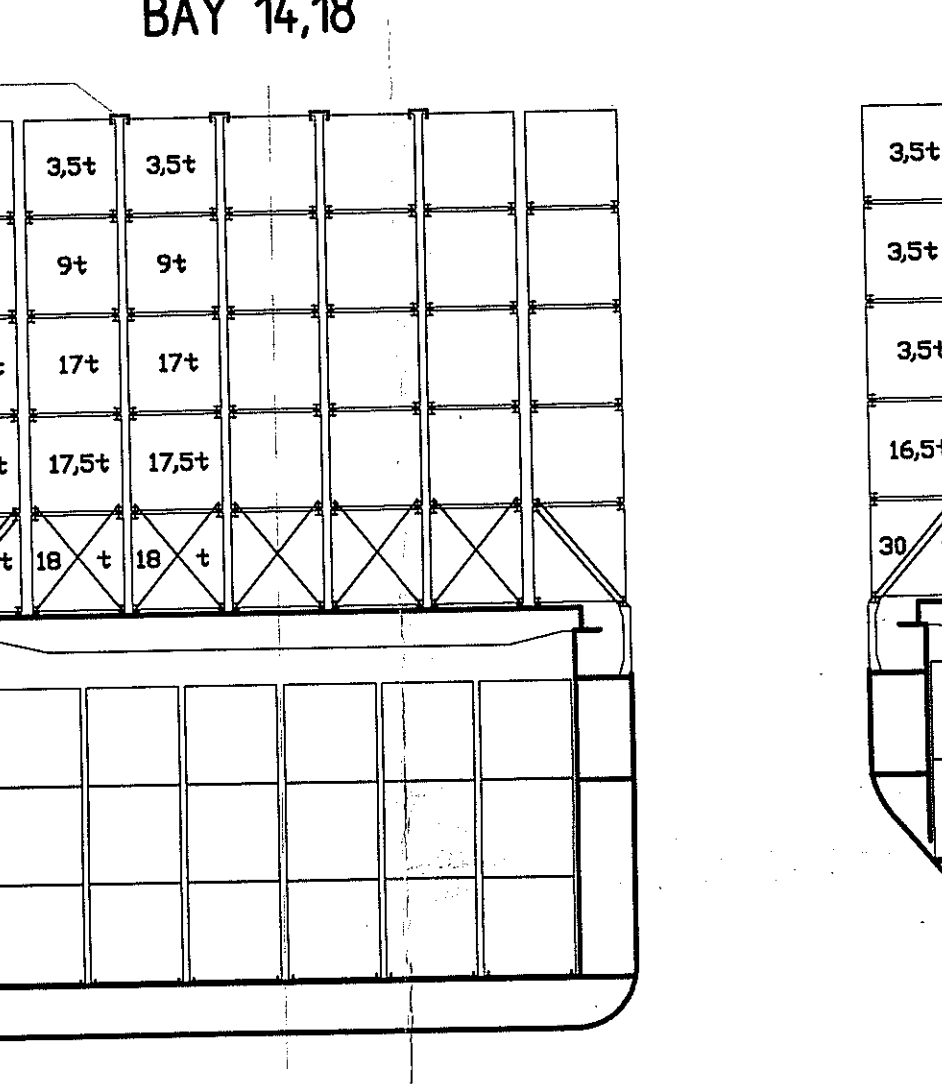
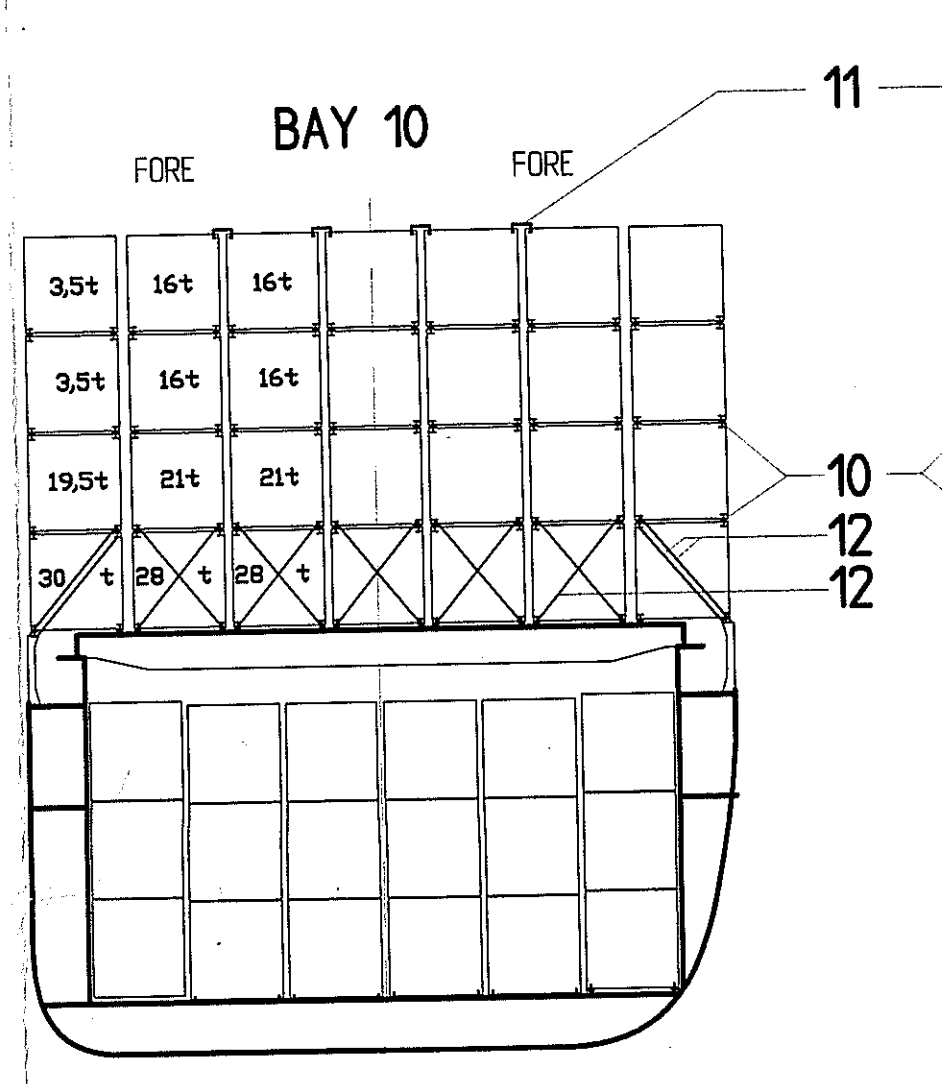
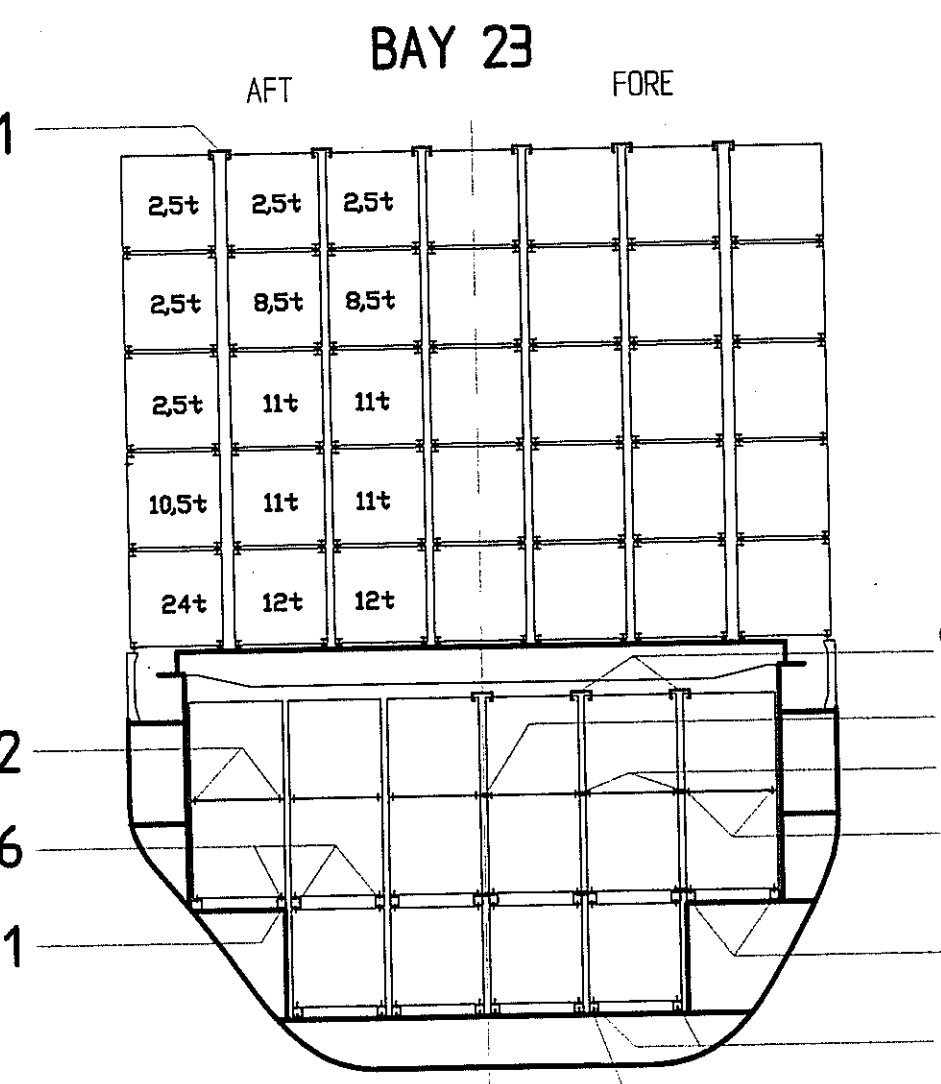
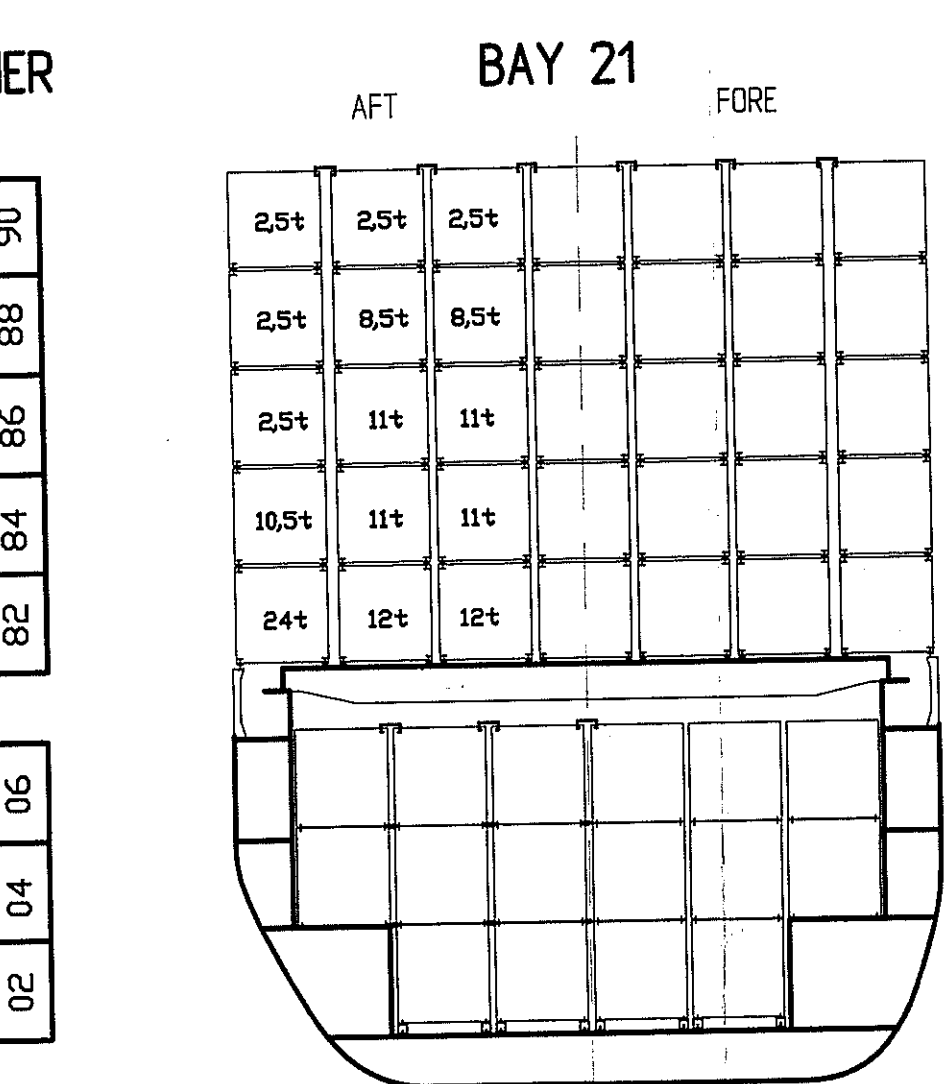
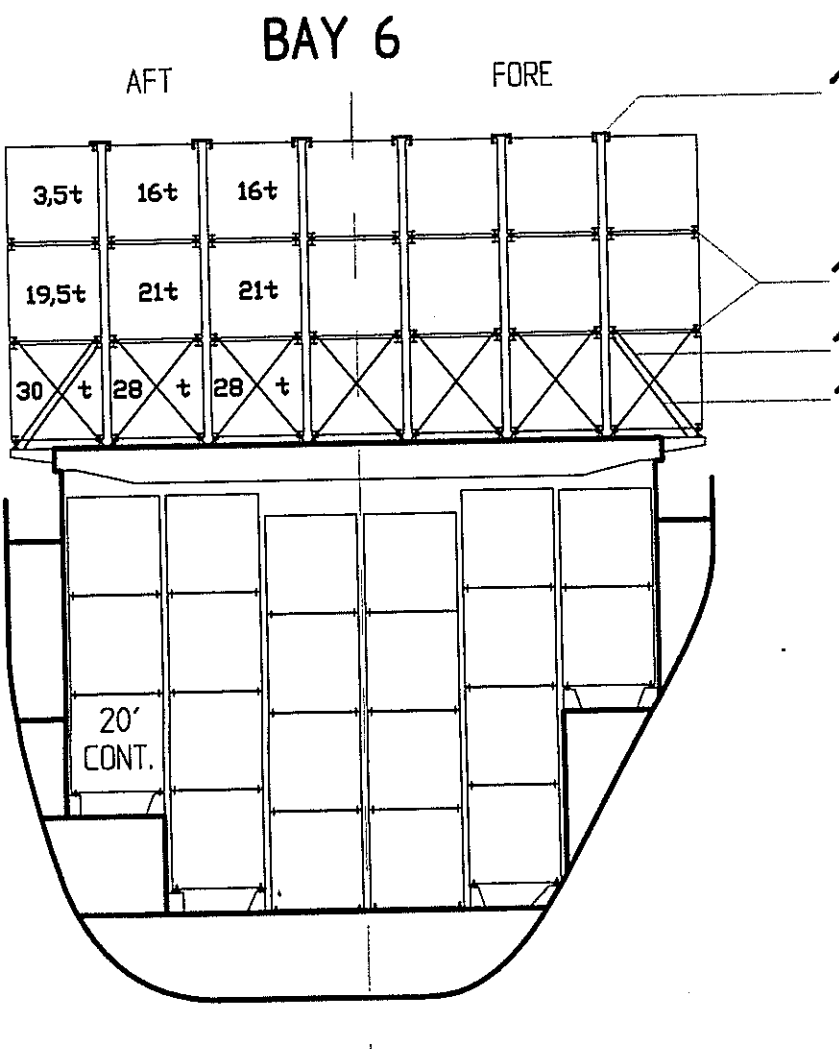
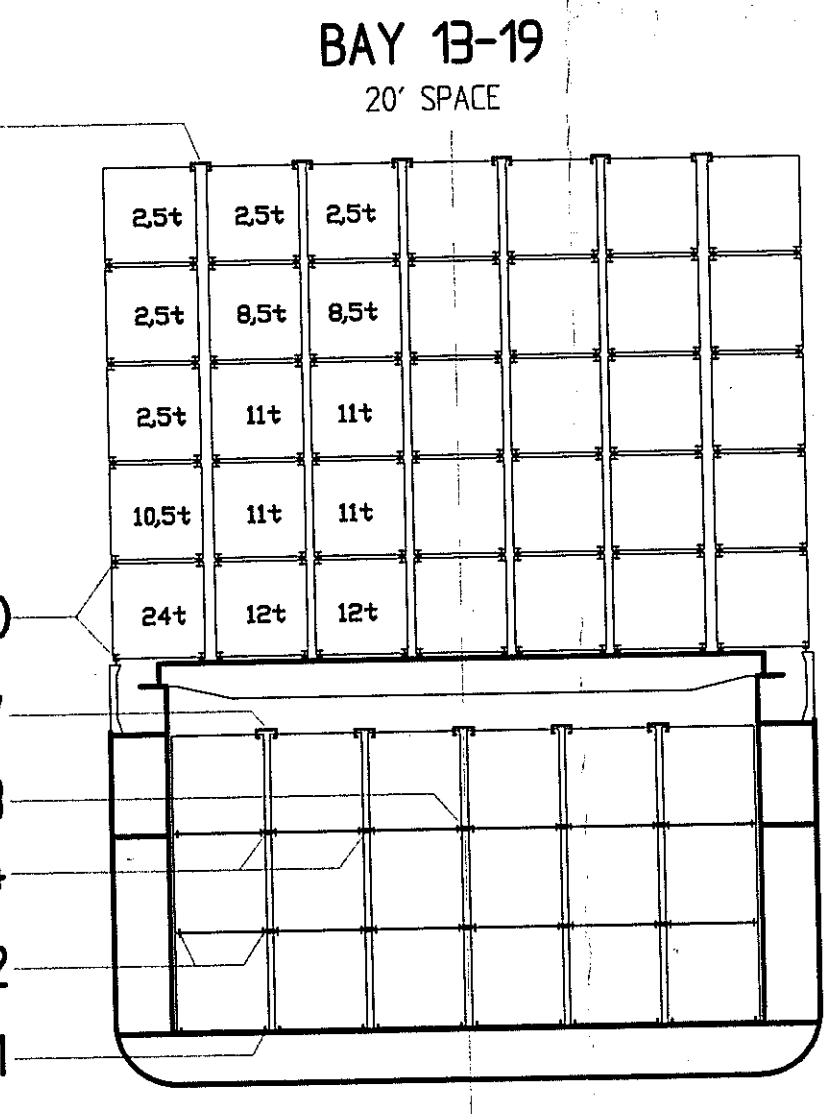
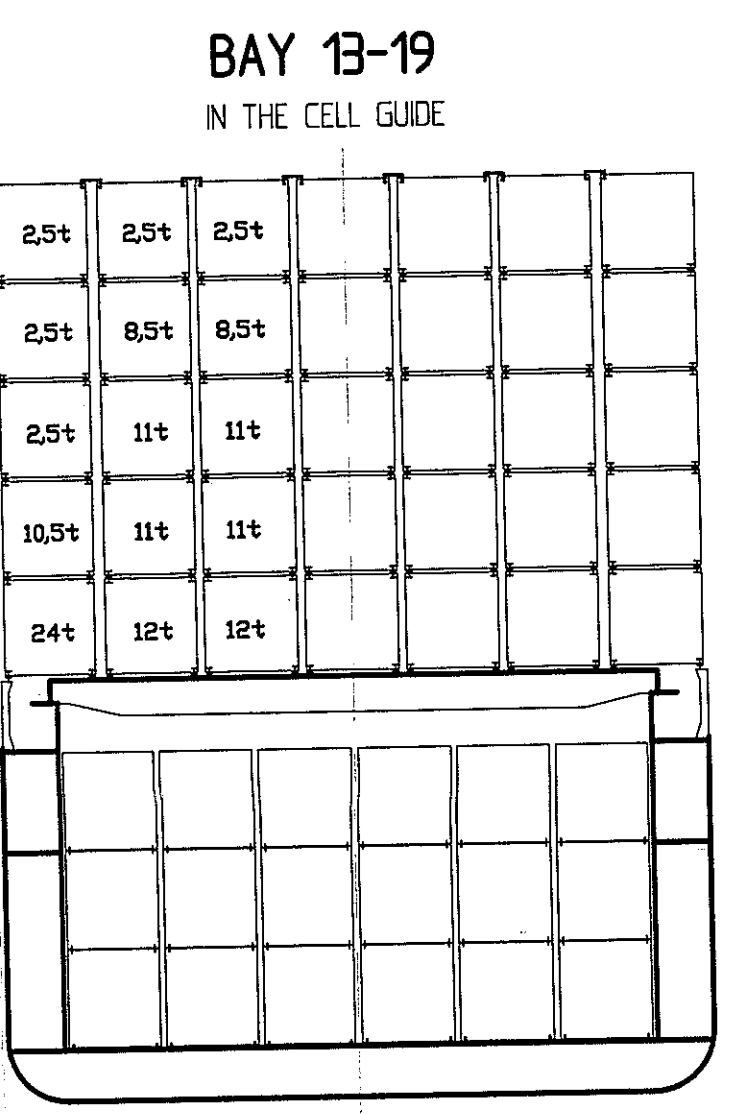
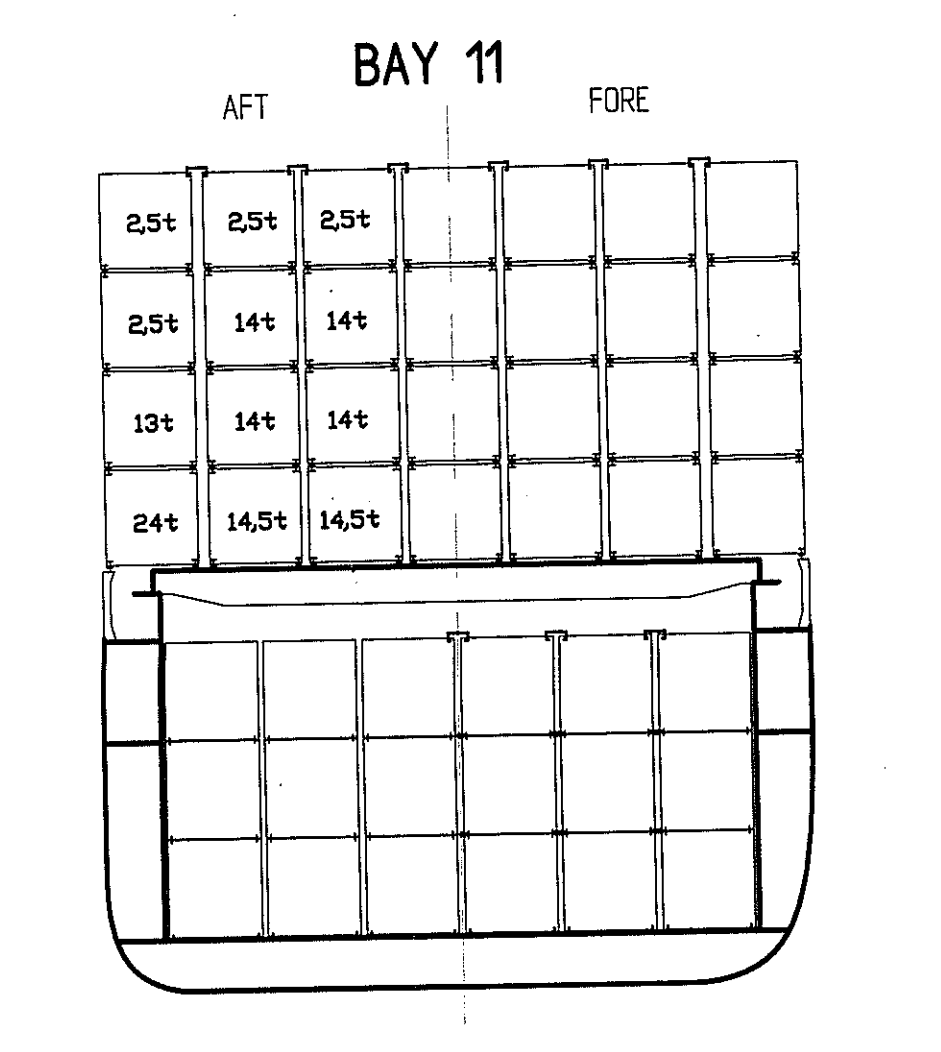
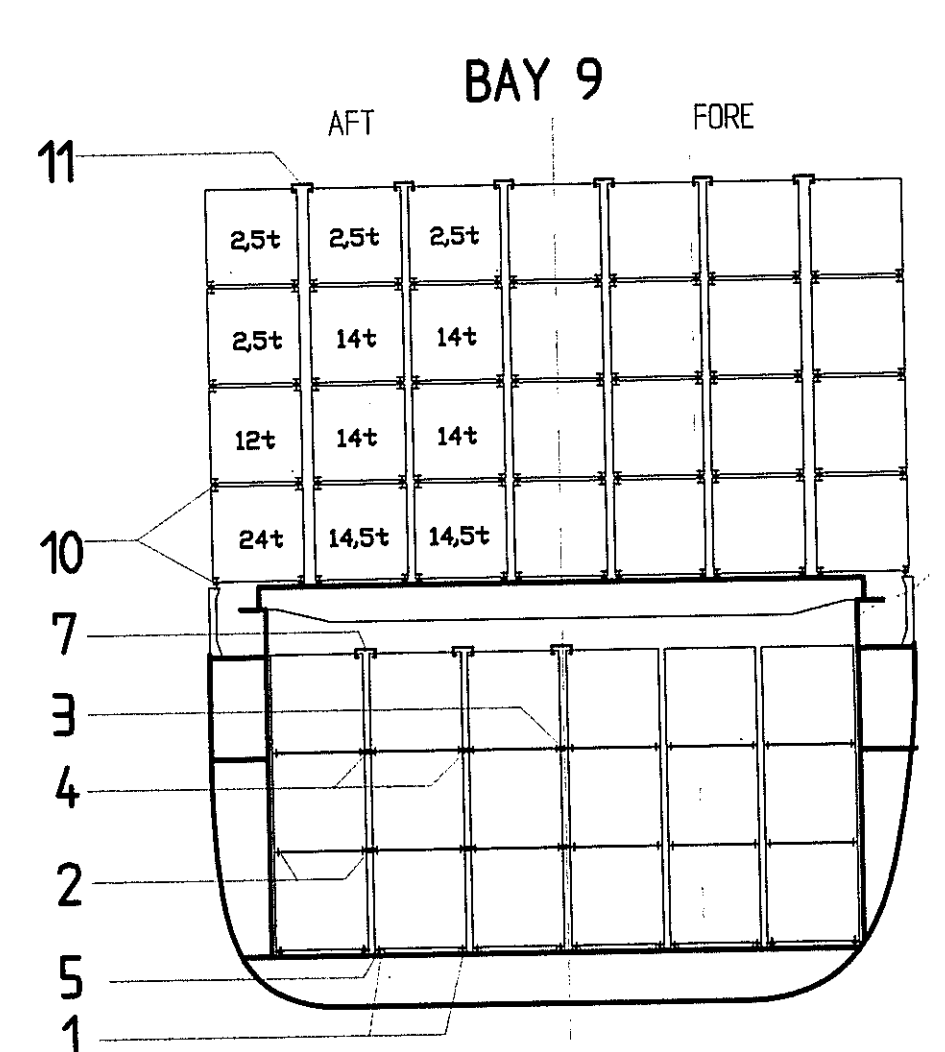
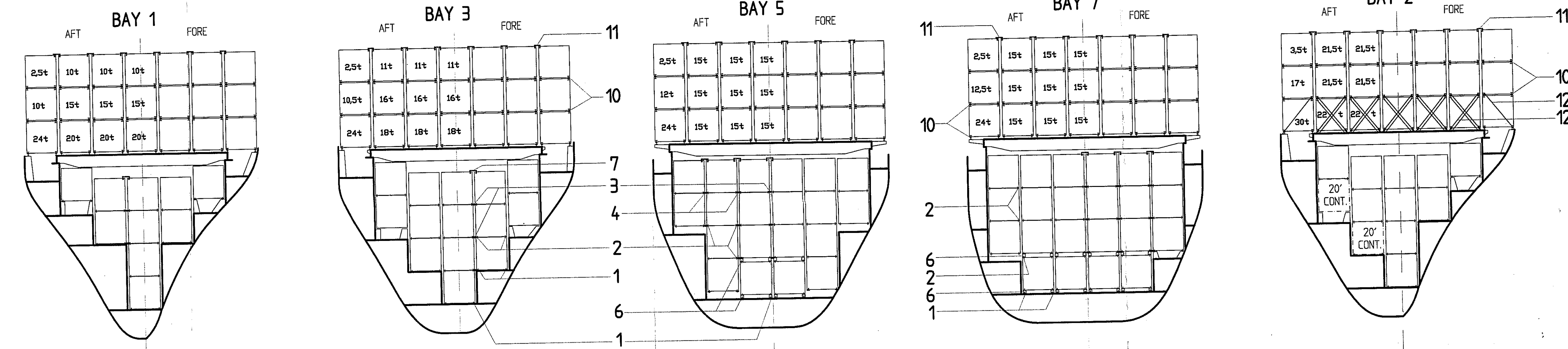
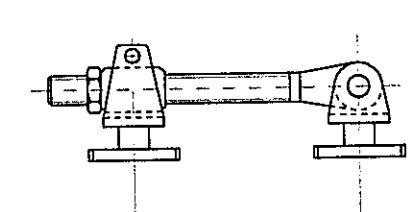
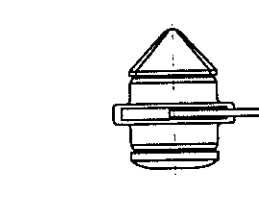
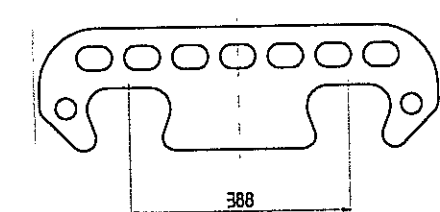
BAY 16

8' CONT. = 2.5'	8' CONT. = 2.5'
4' CONT. = 3.5'	4' CONT. = 3.5'
8' CONT. = 2.5'	8' CONT. = 2.5'
4' CONT. = 3.5'	4' CONT. = 3.5'
20' CONT. = 17.5'	8' CONT. = 17.5'
4' CONT. = 14.5'	4' CONT. = 14.5'
20' CONT. = 20'	20' CONT. = 20'
4' CONT. = 20'	4' CONT. = 20'

Staustück 1    Staustück 2    Druckstück 3/4    Ausgleichstau. 5/6    Druckbrückenfitting 7



PLATTE FÜR TWISTLOCK 8



TIER  
90  
89  
88  
87  
86  
85  
84  
83  
82  
81  
80  
79  
78  
77  
76  
75  
74  
73  
72  
71  
70  
69  
68  
67  
66  
65  
64  
63  
62  
61  
60  
59  
58  
57  
56  
55  
54  
53  
52  
51  
50  
49  
48  
47  
46  
45  
44  
43  
42  
41  
40  
39  
38  
37  
36  
35  
34  
33  
32  
31  
30  
29  
28  
27  
26  
25  
24  
23  
22  
21  
20  
19  
18  
17  
16  
15  
14  
13  
12  
11  
10  
9  
8  
7  
6  
5  
4  
3  
2  
1

CONTAINER LOADING CAPACITY

ON THE HATCHES	20'/24.5'/30'	= 45t
ON THE HATCHES	40'/45'/49'	= 65t
FRONT OF THE DECKHOUSE	20'/24.5'/30'	= 60t
FRONT OF THE DECKHOUSE	40'/45'/49'	= 80t
IN THE HOLD 1+2	20'/30'	= 96t
IN THE HOLD 1+2	40'	= 136t
IN THE HOLD 3+4	20'/24.5'/30'	= 81t
IN THE HOLD 3+4	40'/45'/49'	= 102t

CONTAINER CAPACITY

CONTAINER	20'		40'		+ 20'	
	1 ST TIER	2 ND TIER	1 ST TIER	2 ND TIER	1 ST TIER	2 ND TIER
ON DECK	96	49	0	0	0	0
1 ST TIER	100	50	0	0	0	0
2 ND TIER	100	50	0	0	0	0
3 RD TIER	72	36	0	0	0	0
4 TH TIER	58	29	0	0	0	0
5 TH TIER	14	7	0	0	0	0
6 TH TIER	0	0	0	0	0	0
TOTAL	440	220	0	0	0	0
HOLD	54	27	0	0	0	0
1 ST TIER	62	29	4	4	0	0
2 ND TIER	68	33	2	2	0	0
3 RD TIER	22	11	0	0	0	0
4 TH TIER	0	0	0	0	0	0
TOTAL	206	100	6	6	0	0
TOTAL	646	320	6	6	0	0

CELL GUIDE FOR 40' CONTAINER IN THE HOLD

NO.	DESCRIPTION	QUANTITY	UNIT	WEIGHT	LOADING POINT	MODEL
14	TURNBUCKLES	32	50t, 490KN	23t, 230KN	TBS-36	
13	LASHING BAR	32	50t, 490KN	23t, 230KN	LB-11	
12	LASHING BAR	244	50t, 490KN	23t, 230KN	LB-11	
11	PUSH BRIDGE FITTING	170			H-2-565	
10	TWISTLOCK	1760			K-66	
9	TURNBUCKLES	244	50t, 490KN	23t, 230KN	TBS-36/1	
8	LINKAGE PLATES	40			IP-66-388	
7	PUSH BRIDGE FITTING	54			H-1-475	
6	DISTANCE CONE	16			HA-1-299	
5	DISTANCE CONE	8			HA-1-299	
4	PRESSURE ADAPTER	82			PA-1-365	
3	PRESSURE ADAPTER	32			PA-1-365	
2	STACKING CONE	554			SZ-1	
1	BOTTOM STACKING CONE	234	BREAKING LOAD	WORKING LOAD	K-9	

CONTAINER EQUIPMENT AT MAXIMUM CONTAINER CAPACITY WITHOUT CONSIDERATION OF THE STABILITY CRITERIUMS

APPROVED BY GL  
JOURNAL NO. 46793/95  
DATE: 26.5.95  
REGISTER NO.  
YARD No. 1110 = 90514  
YARD No. 1097 = 90727

DATE	NAME	YARD No.
24. 4. 95	E. Quast	1110
		1097

2 JUNI 1995

INDEX	ART DER ÄNDERUNG	DATUM	NAMEN

SCALE	DRAWING NO.
1:200	156.02-325.01