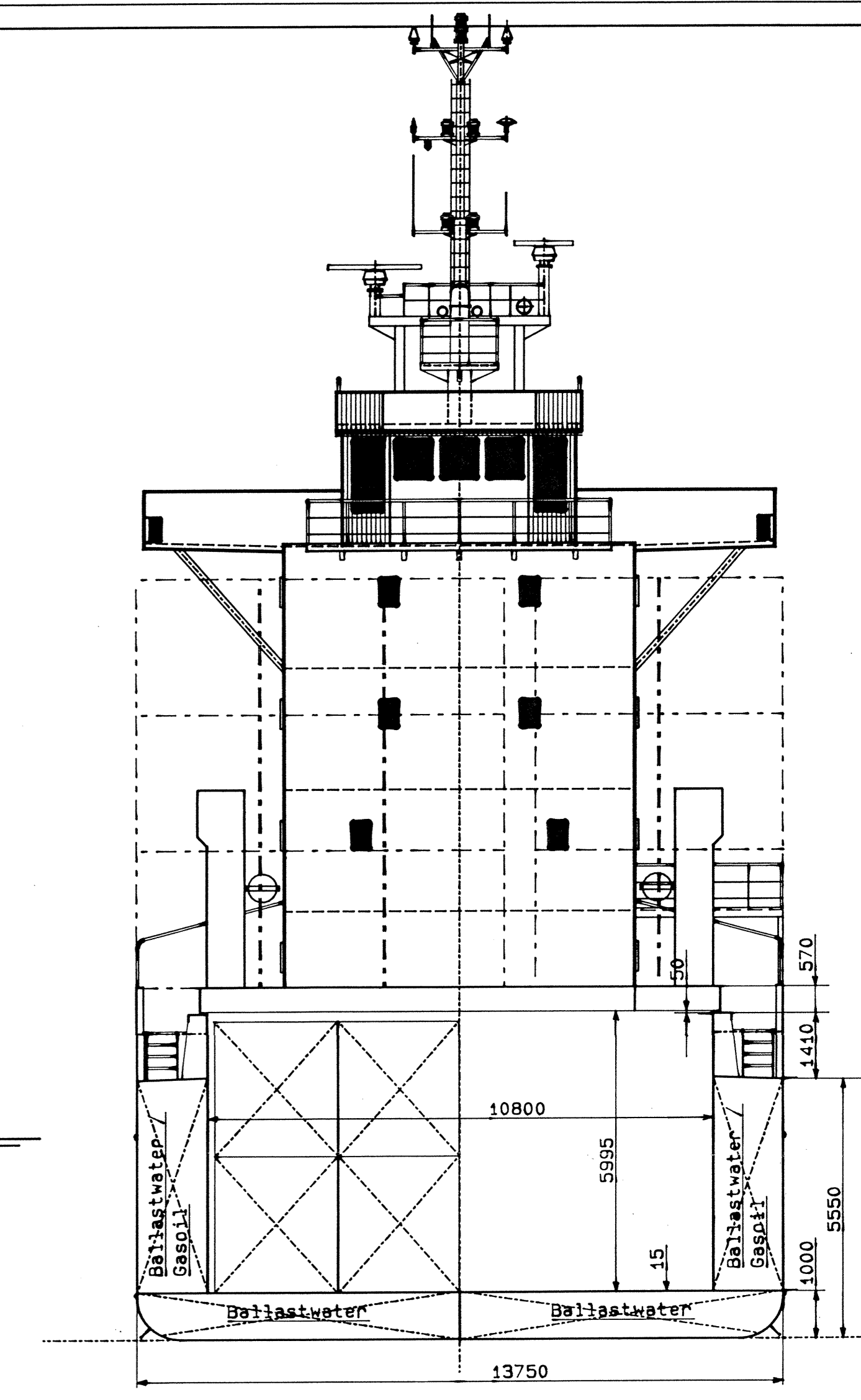
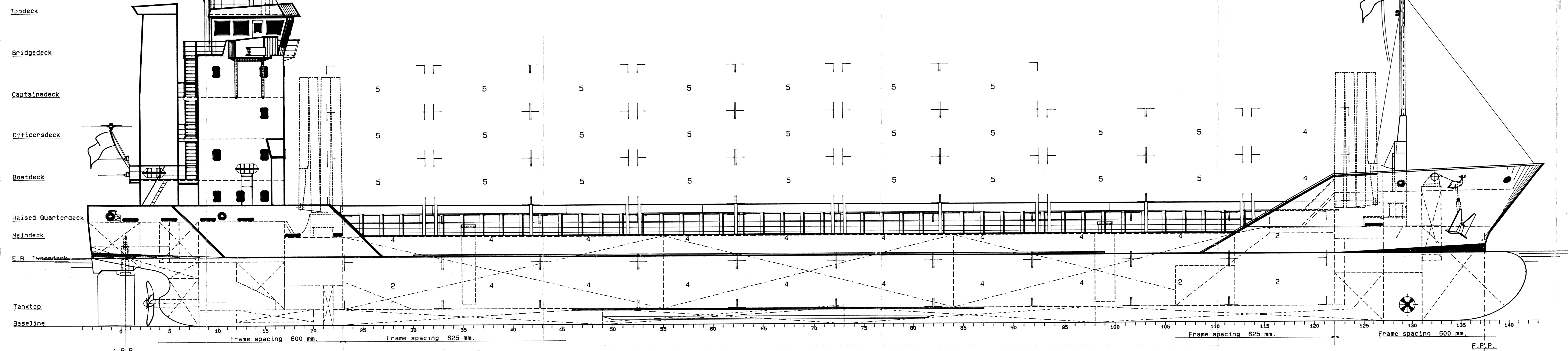


PROFILE



RAISED QUARTERDECK

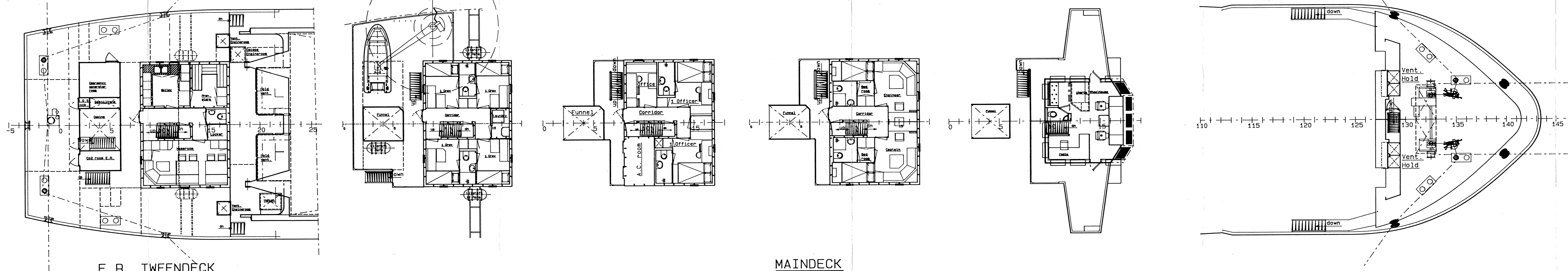
BOATDECK

OFFICERSDECK

CAPTAINSDECK

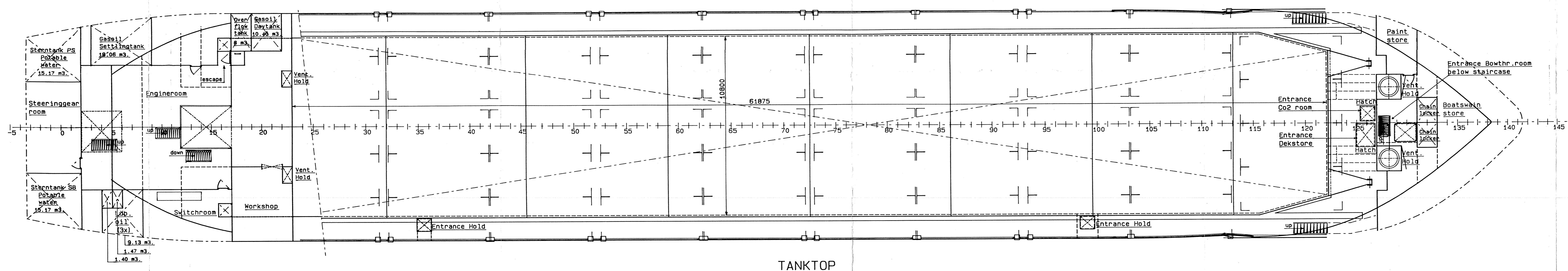
BRIDGEDECK

FORECASTLEDECK

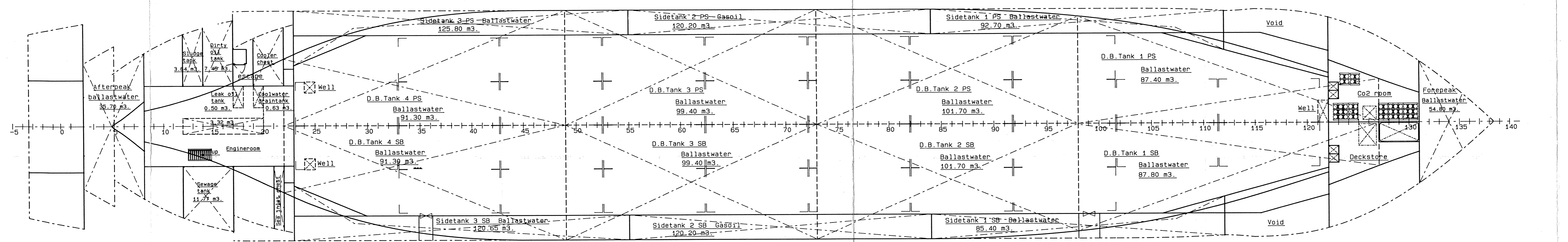


E. R. TWEENDECK

MAINDECK



TANKTOP



MAIN PARTICULARS

Length over all	abt. 90.00 m.
Length between perpendiculars	84.65 m.
Breadth moulded	13.75 m.
Depth to maindeck	5.55 m.
Draft (freeboard)	abt. 4.30 m.
Deadweight	abt. 2800 ton
Hold capacity	abt. 136600 cbft.
Container capacity: in hold	72 TEU
on deck	133 TEU
total	205 TEU
Tonnage (acc. conv. 1969)	abt. 2036 GT
Tank capacities: M.D.O.	abt. 240 m³
Potable water	abt. 30 m³
Ballastwater	abt. 1275 m³

CONO FEEDER 200

TILLE SHIPYARDS

CONOSHIP INTERNATIONAL B.V. P.O. BOX 6029
GRONINGEN - THE NETHERLANDS

General Arrangement

SCALE: 1:100	DATE: 12-06-1995	YARD NO.: 308	DRAWING NO.: 6200	SHEET: A B C
DRAWN BY: v.v. Zelderen		VERSION: A B C		