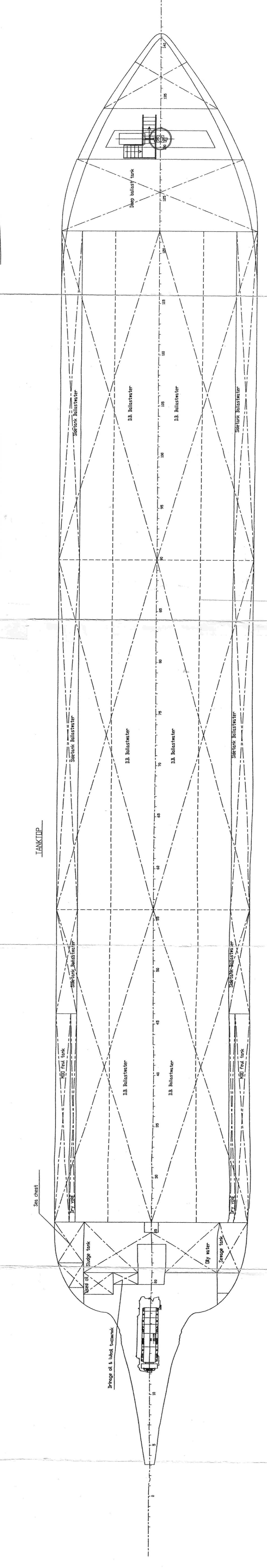
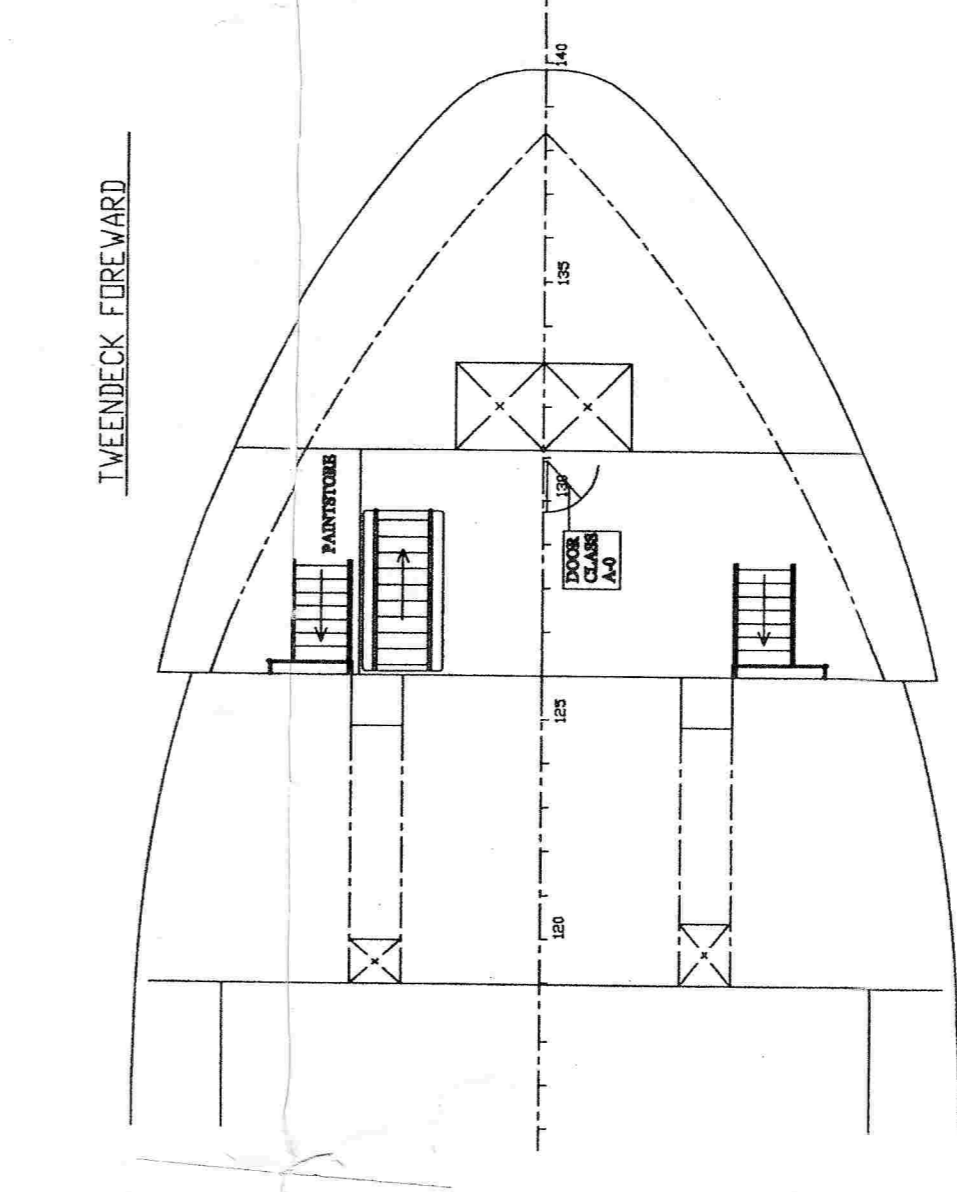
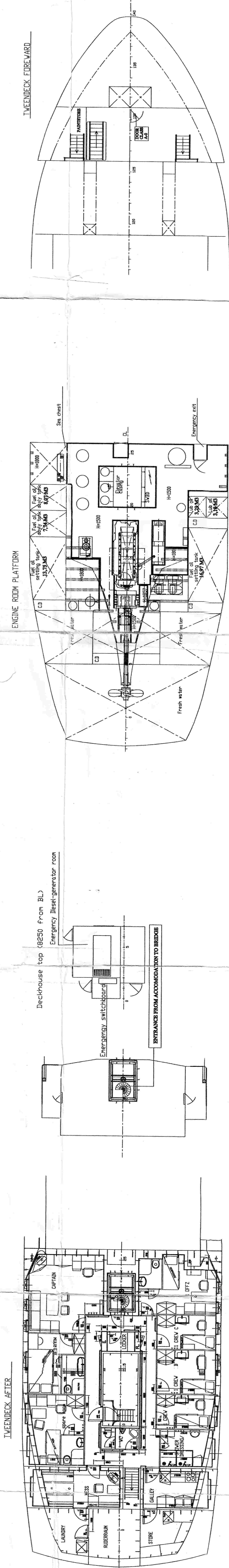
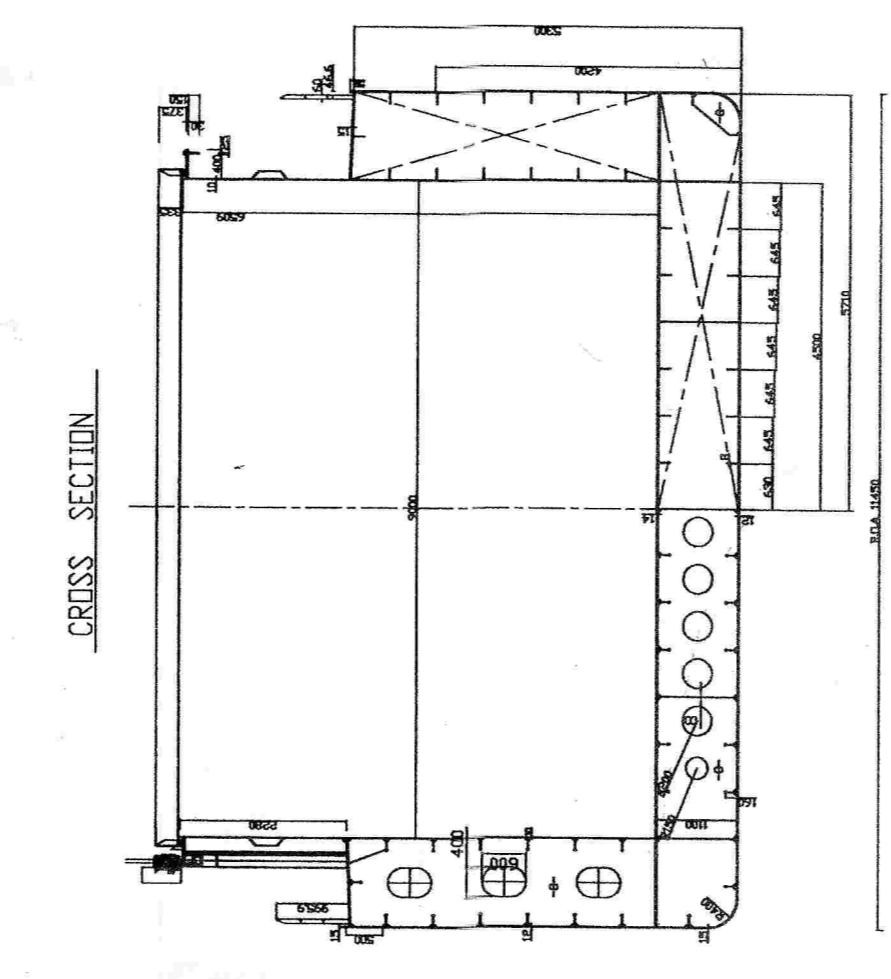
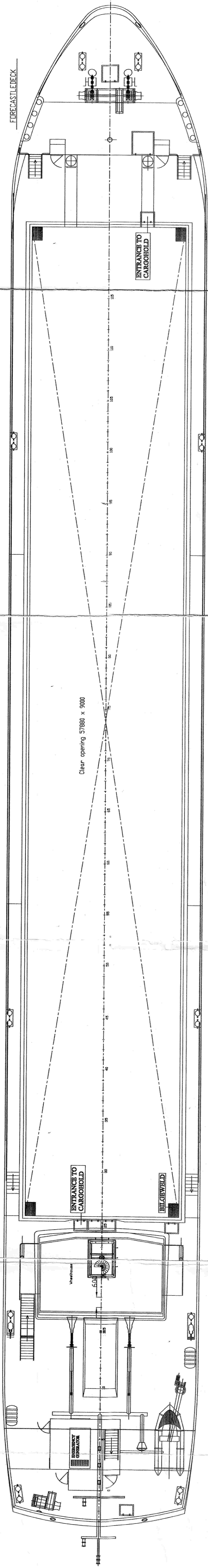
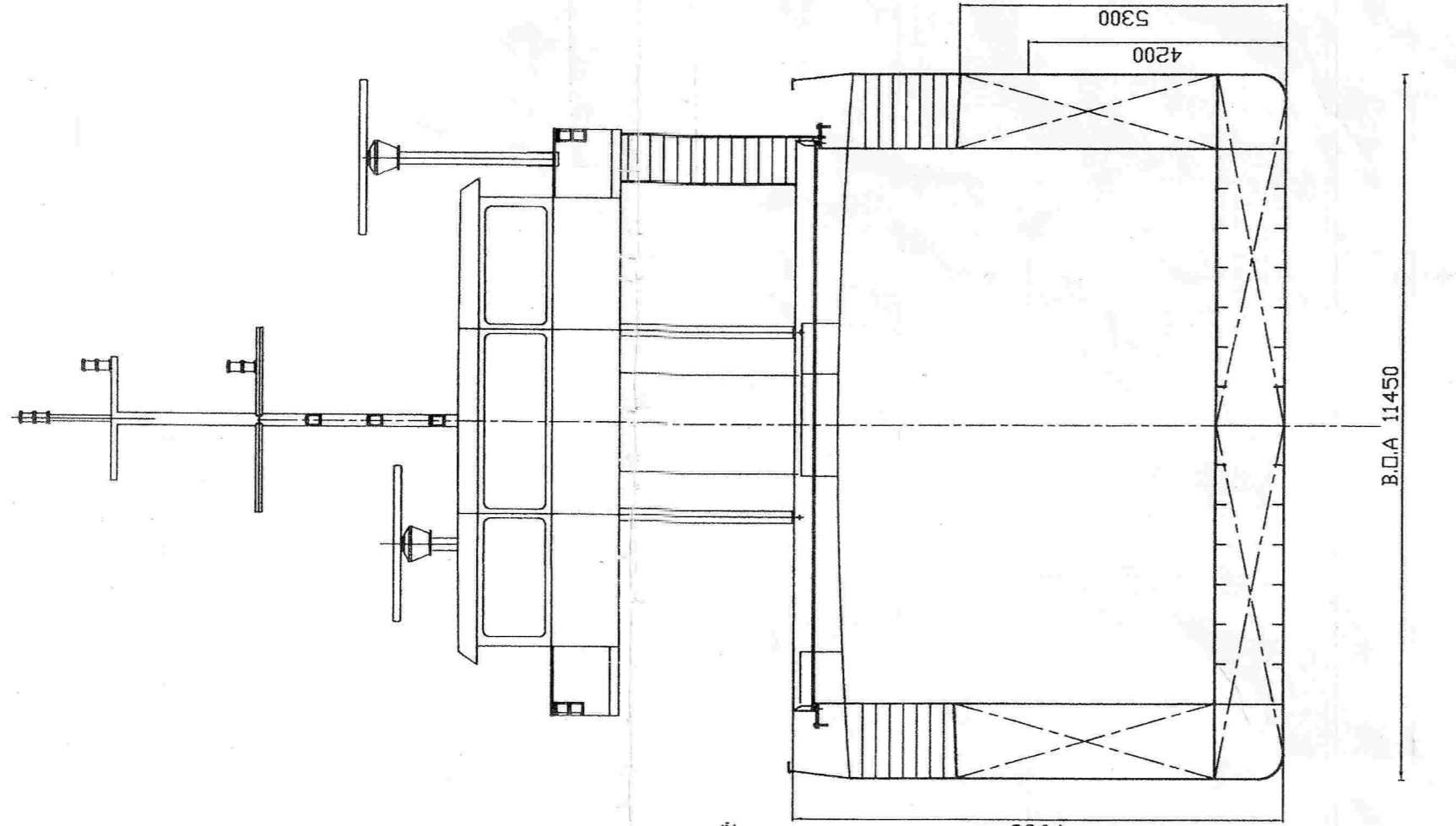
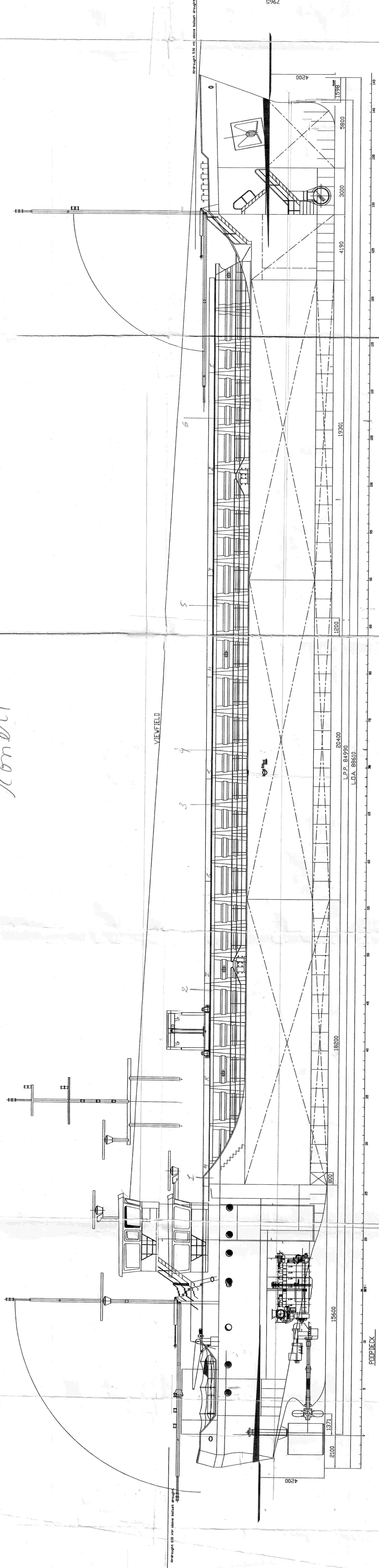


v.DFB  
designer

6ang  
cu for  
drawn: 01/2001

Angaben nicht  
Genau



1	LENGTH OVER ALL	88.61 mtr
2	LENGTH BETWEEN PERES	84.99 mtr
3	BREADTH OVER ALL	11.45 mtr
4	BREADTH MOULDED	11.39 mtr
5	DEPTH	5.50 mtr
6	DRAUGHT	4.24 mtr
7	HOLD CAPACITY	3385 cbm
8	DISPLACEMENT	APPROX 3697 ton
9	LIGHT SHIP	APPROX 871 ton
10	DWCC (all end)	APPROX 2826 ton
11	MAIN ENGINE (MEDIUM SPEED)	APPROX 750 KW
12	SPEED LOADED TRAIL COBITION	APPROX 10 KNOTS
13	CLASS	notation
14		
15		
16		
17	TANKCAPACITIES:	
18	BALLAST WATER	APPROX 1380 cbm
19	MDO FEUL BUNKERS AFT	APPROX 15 cbm
20	MDO FEUL BUNKERS MID	APPROX 125 cbm
21	POTABLE WATER	APPROX 30 cbm
22		
23		
TOT		

MATERIAL  
Builder DTS Ltd Chalot road LONDON  
Sea Travers v Lavt  
Preliminary GENERAL ARRANGEMENT  
COASTER 015  
H.S.V.D. No. 2008.015.00.01 Date 21.02.2008  
Lava Project UAB  
Statute planas 2  
88.60x11.45x4.20  
2008.015.00.01