

POOPDECK

A-DECK

B-DECK

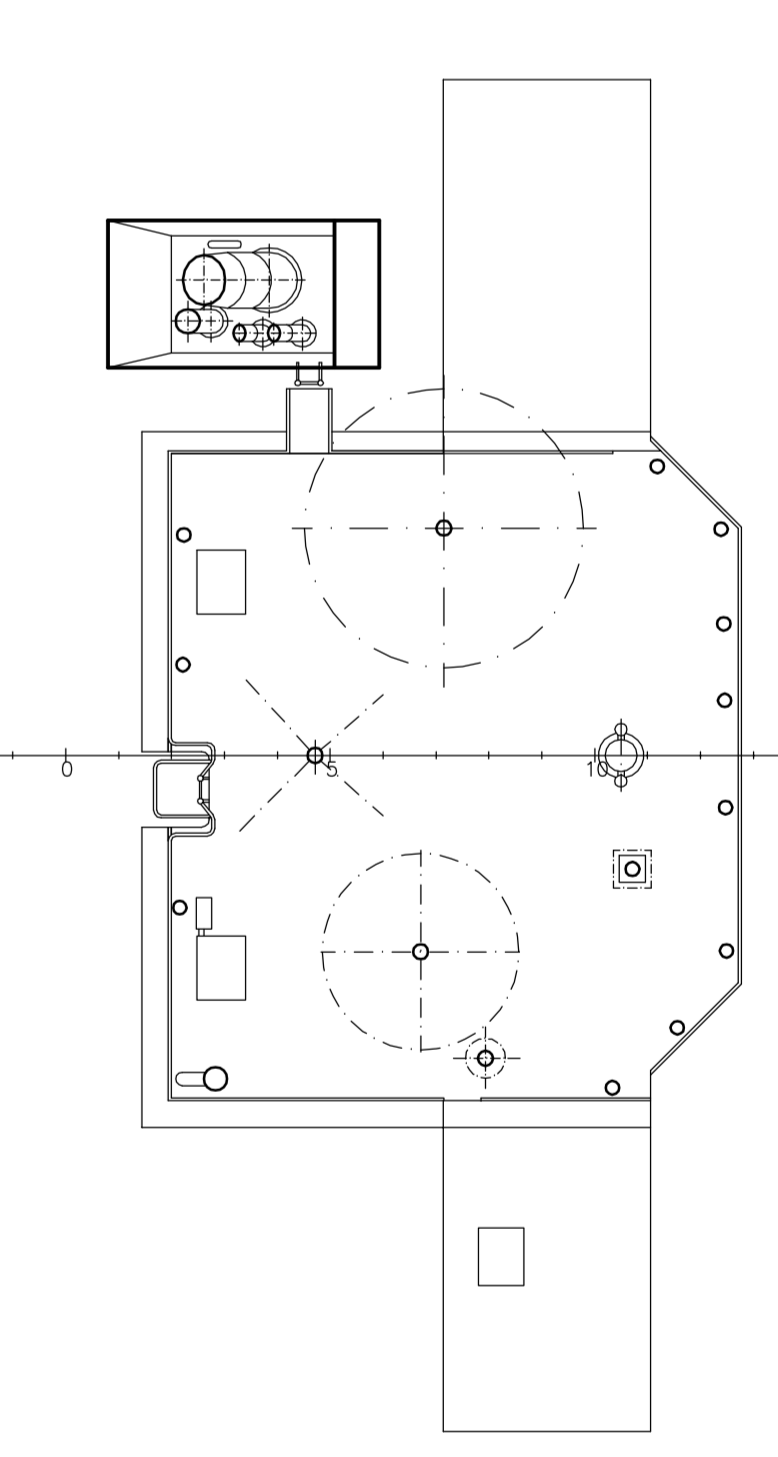
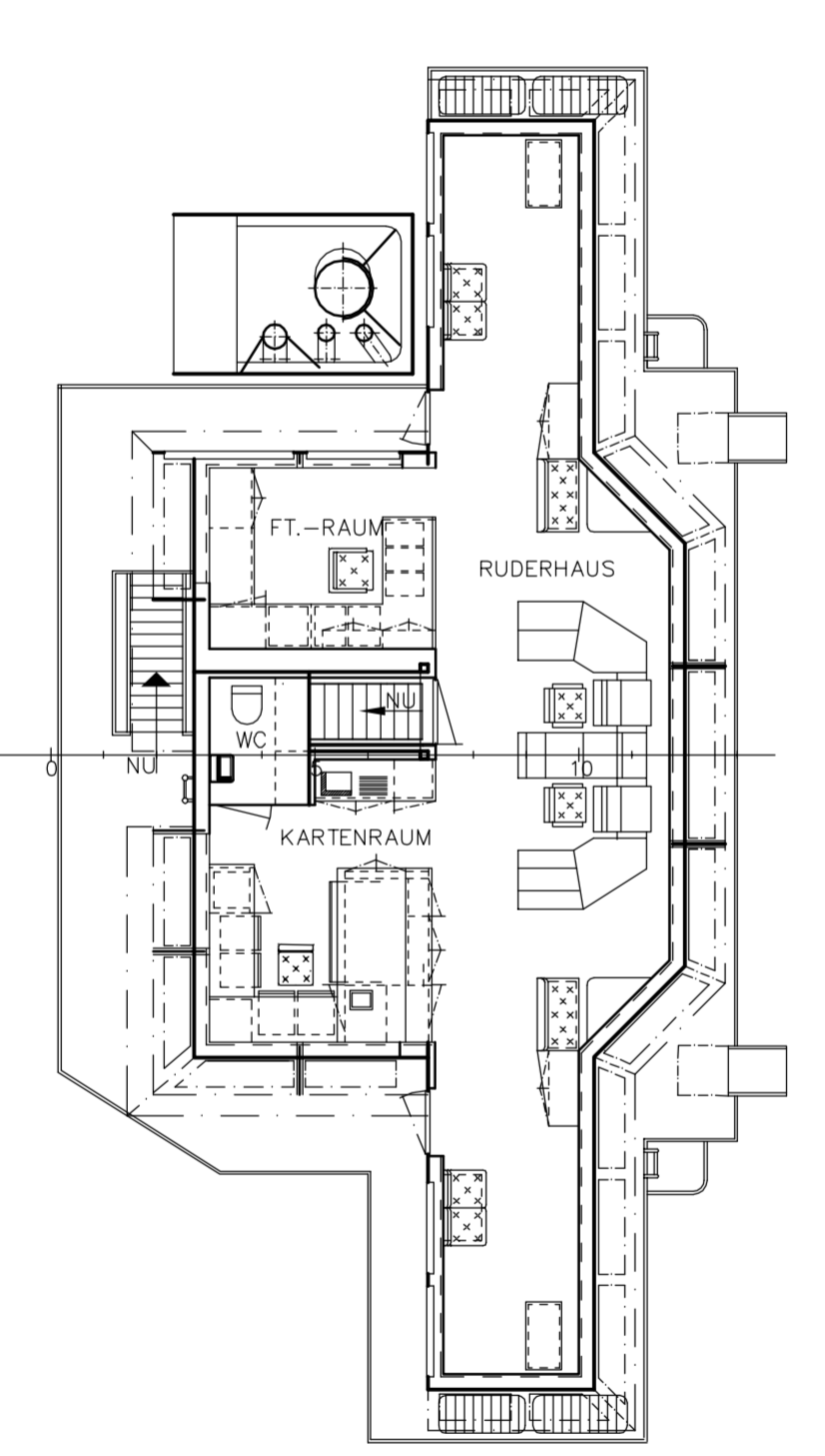
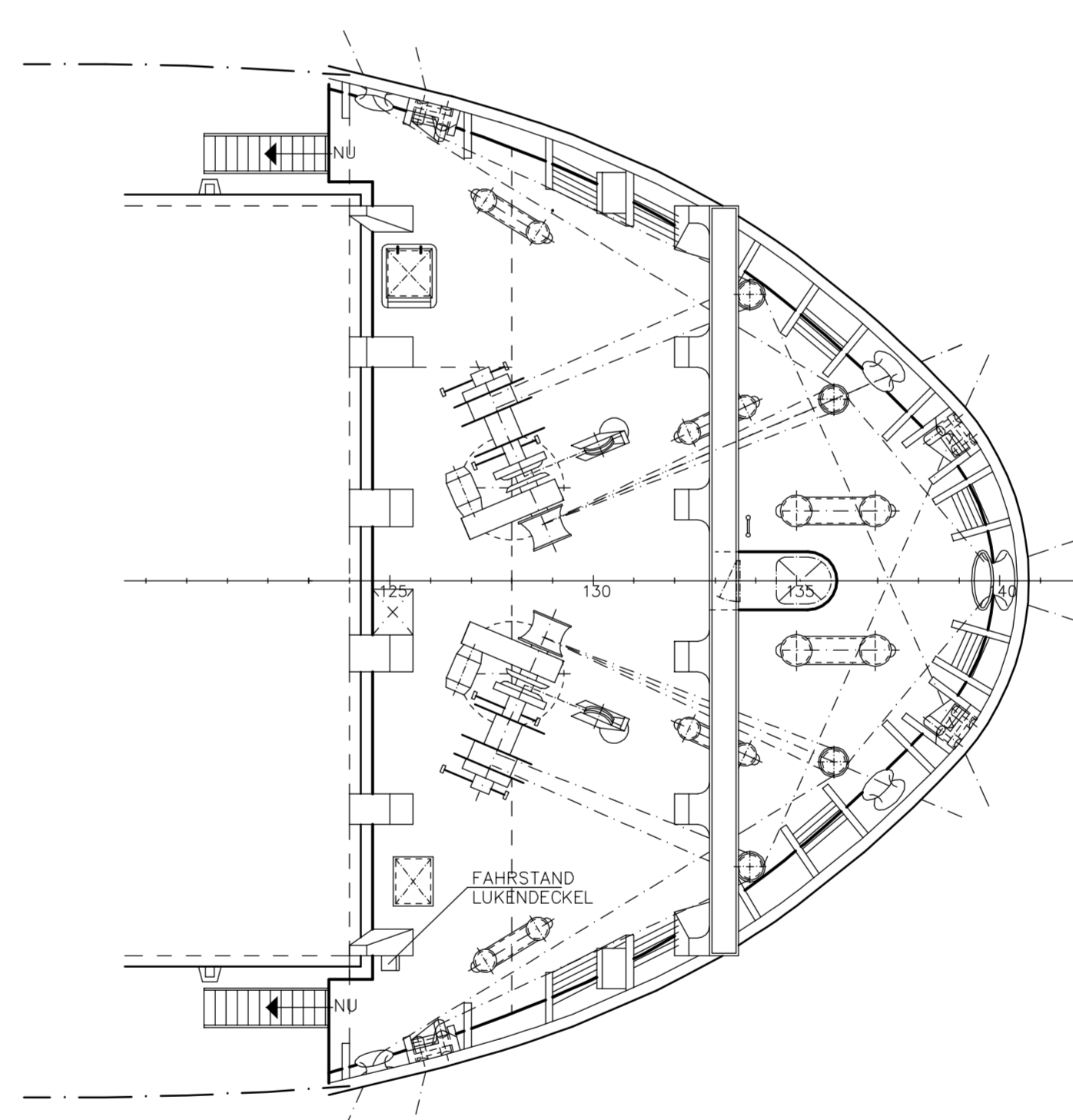
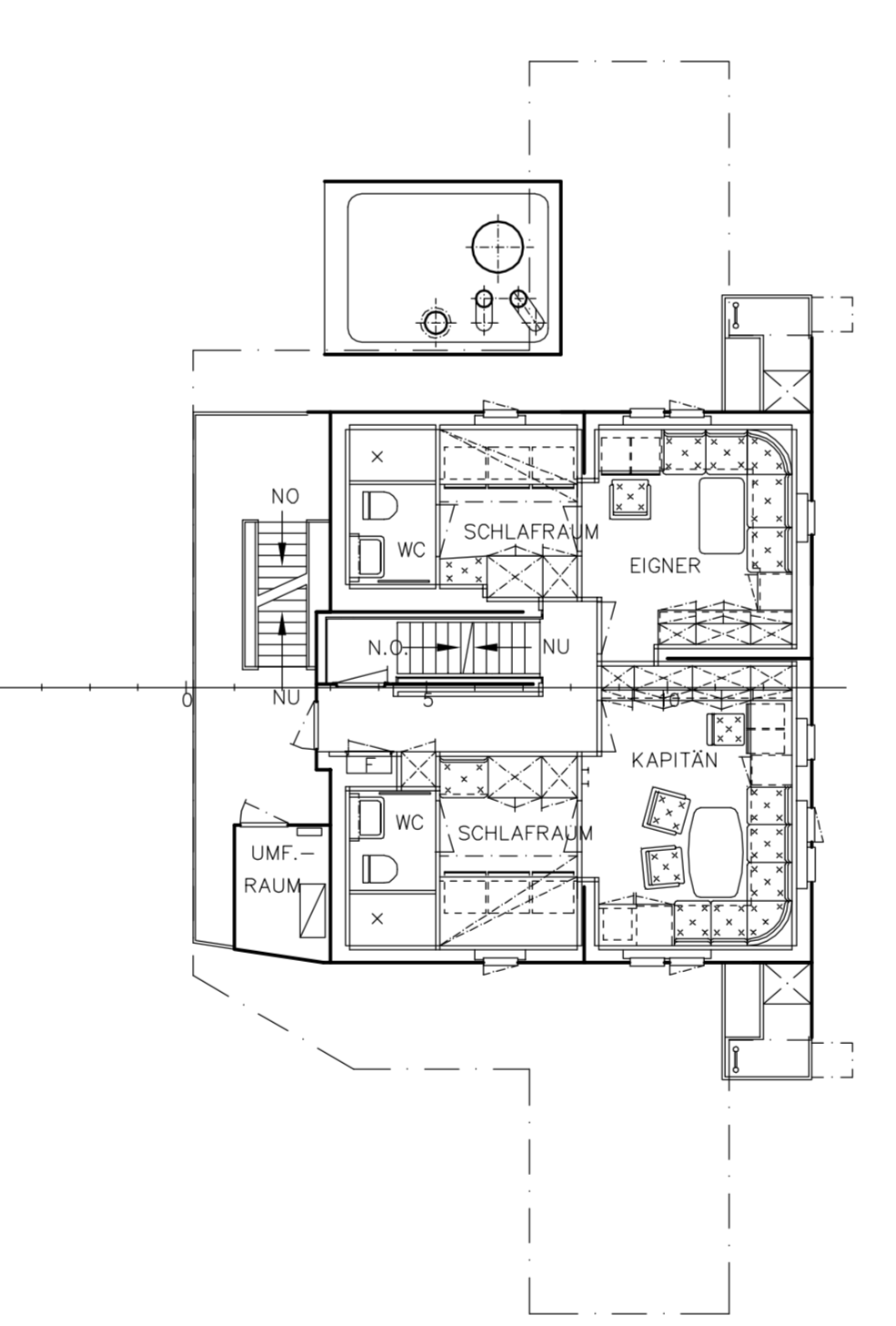
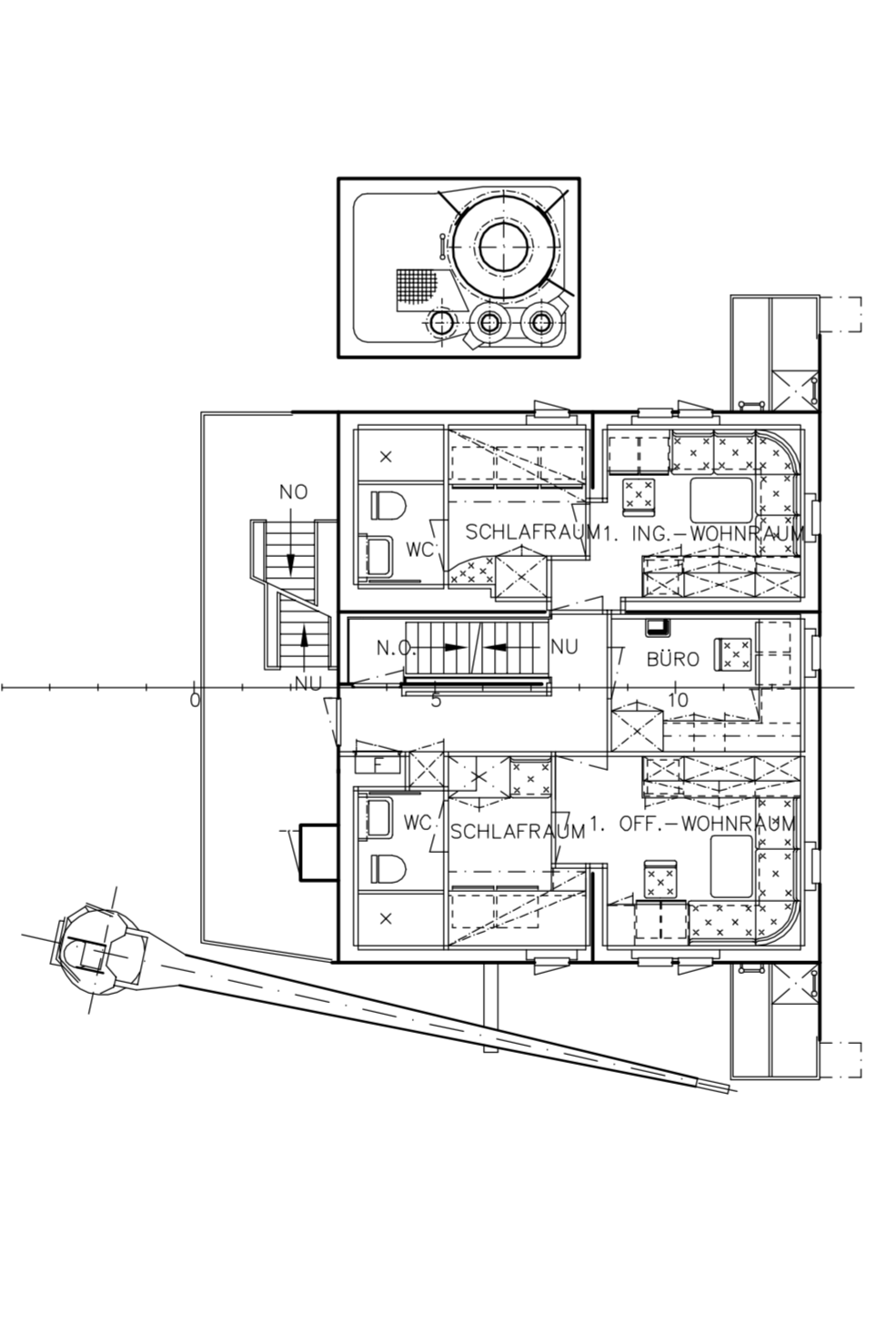
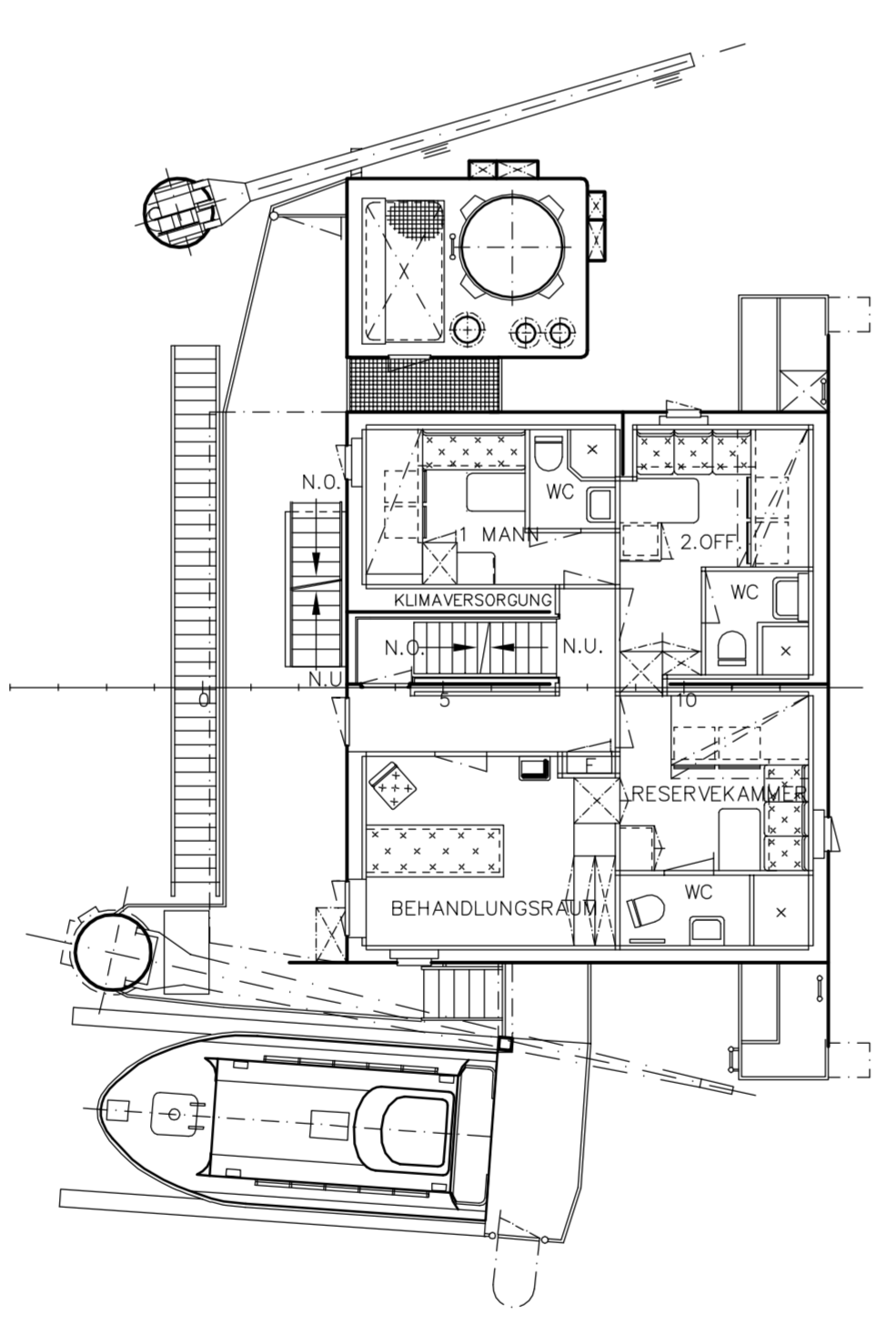
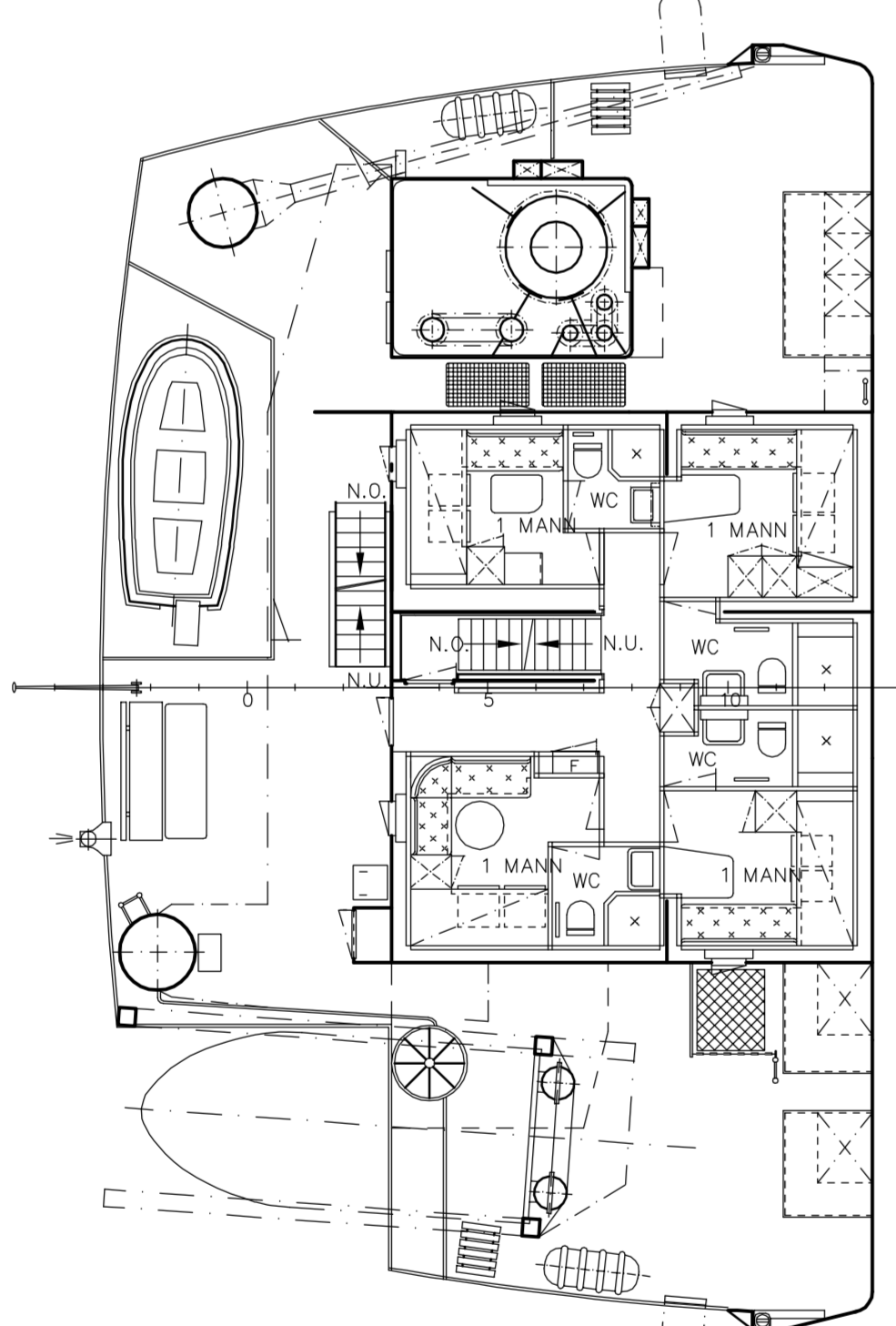
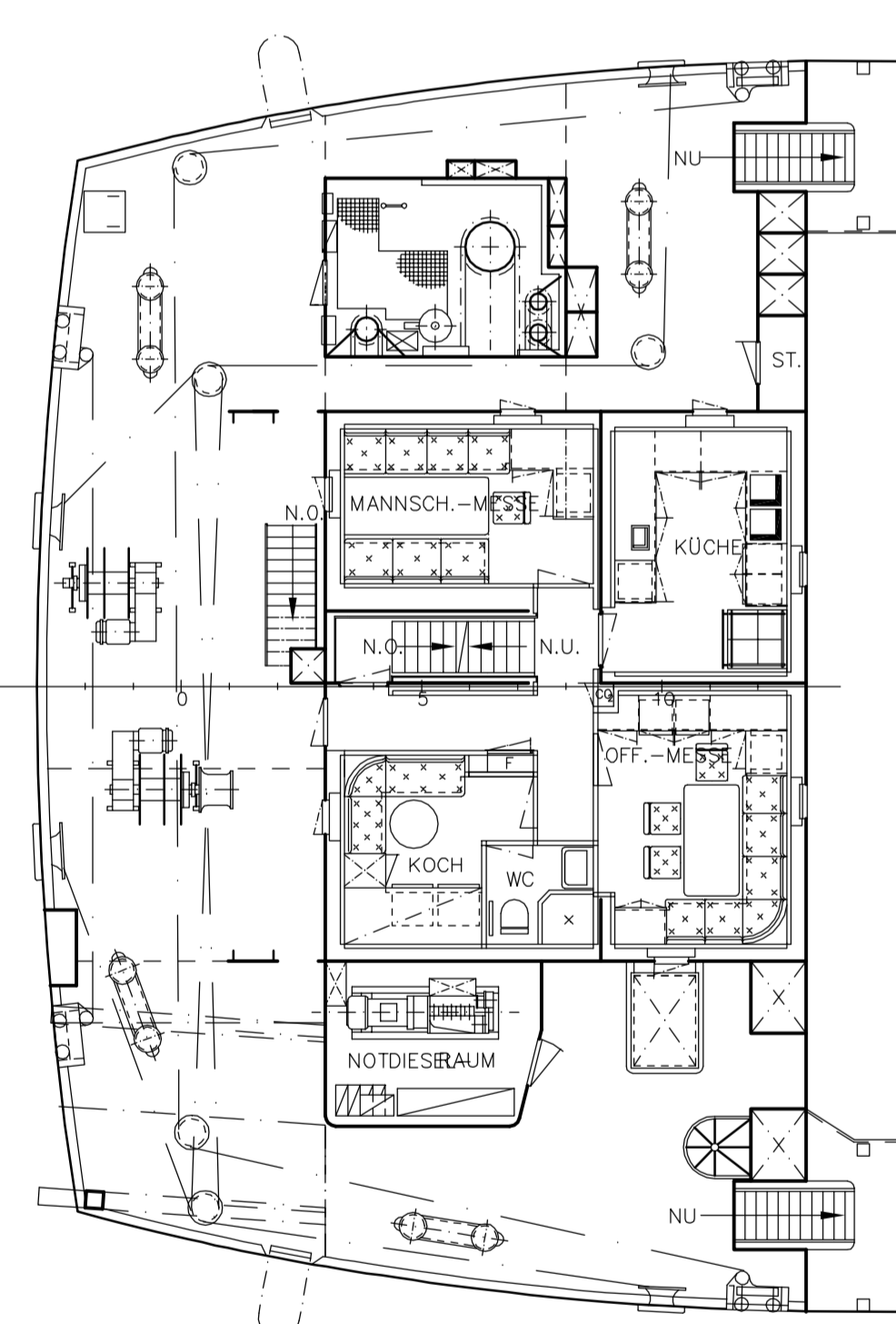
C-DECK

D-DECK

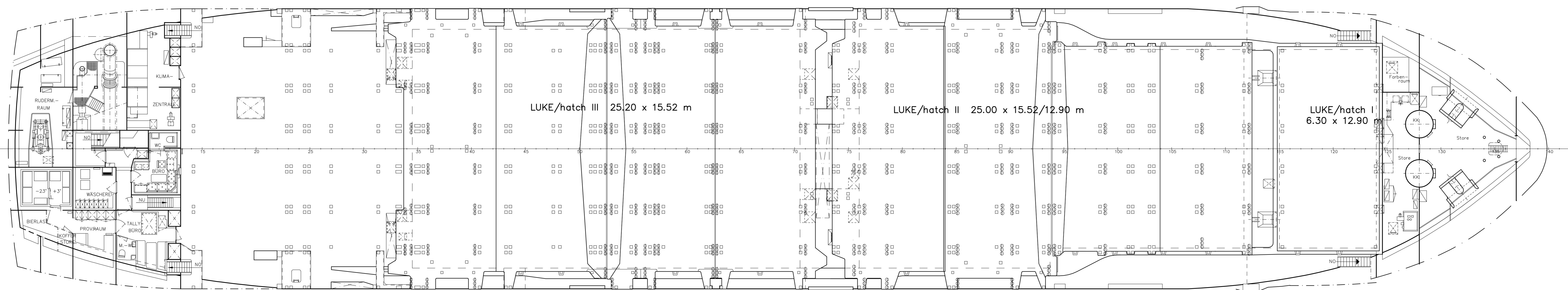
BACKDECK
fore castle deck

E-DECK

F-DECK



1.DECK/1st deck



LUKE/hatch III 25.20 x 15.52 m

LUKE/hatch II 25.00 x 15.52/12.90 m

LUKE/hatch I 6.30 x 12.90 m

Motorfrachtschiff/cargo motor vessel

ANNEGRET

Klasse / class: Germanischer Lloyd 100 A5 E3, "containership"
SOLAS II-2, Reg.54, MC E3 AUT

Hauptabmessungen / principal dimensions

Länge über alles / length over all	101.10 m
Länge über Deck / length measured over deck	99.95 m
Länge zw. d. Loten / length betw. perp.	96.00 m
Breite auf Spanten / breadth moulded	18.20 m
Seitenhöhe bis 1. Deck / depth to 1st. deck	8.25 m
Tiefgang UKK / draught bottom of keel	6.56 m
Tragfähigkeit / deadweight	5218 t/dw
Laderrauminhalt / cargo hold capacity	grain 257000 cuft
Containerkapazität / container capacity	bales 247800 cuft
	20' x 8' x 8.5'
	40' x 8' x 8.5'
Vermessung LONDON RULES :	508 TEU
	BRZ / GT 3999
	NRZ / NT 2176
Geschwindigkeit / trial speed	243 FEU + 22 TEU
	15.5 kn

DRAWN	DATE	NAME	J.J. SIETAS KG	YARD No.
CHECKED	25.10.95	KROHN	Seitenschiffbau GmbH + Co. Neuenfelder Fährdamm 88 21129 HAMBURG	1112
SCALE	GENERAL ARRANGEMENT PLAN			DRAWING No.
1:100				151.15-001.01