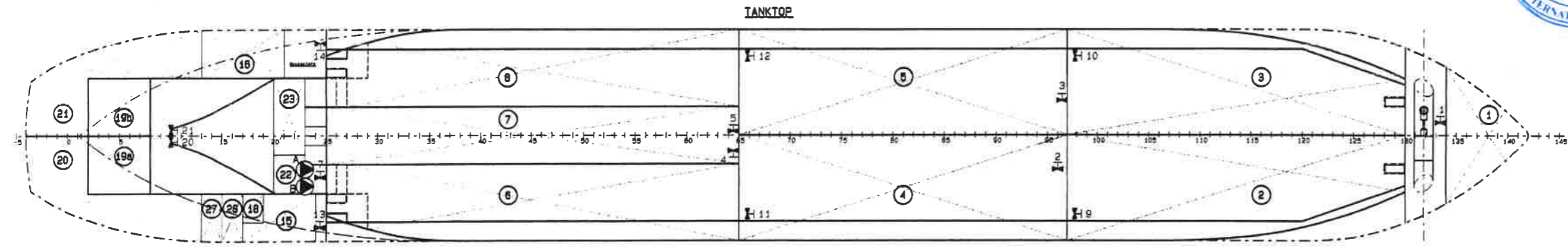
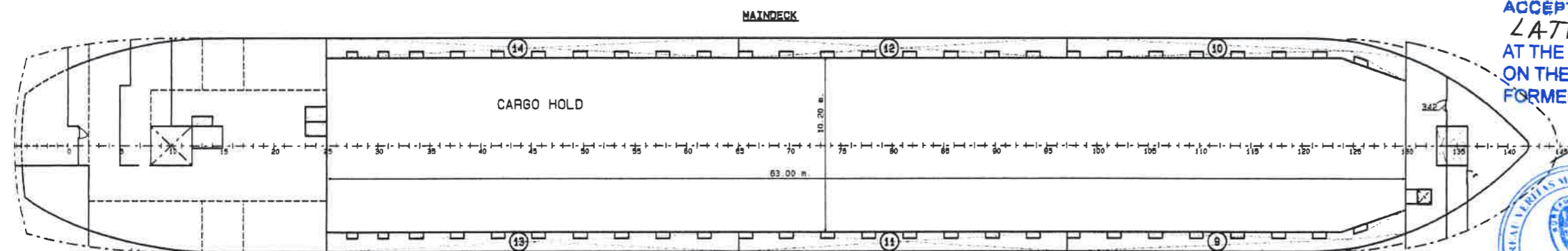
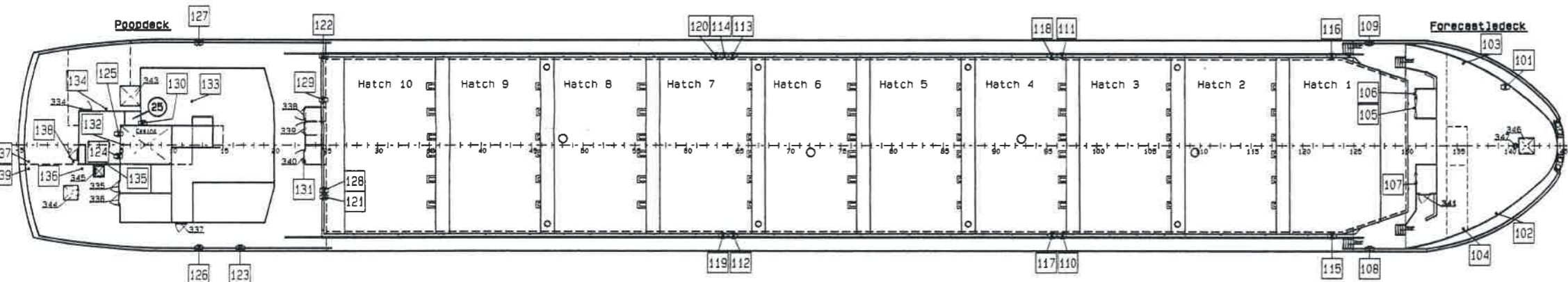
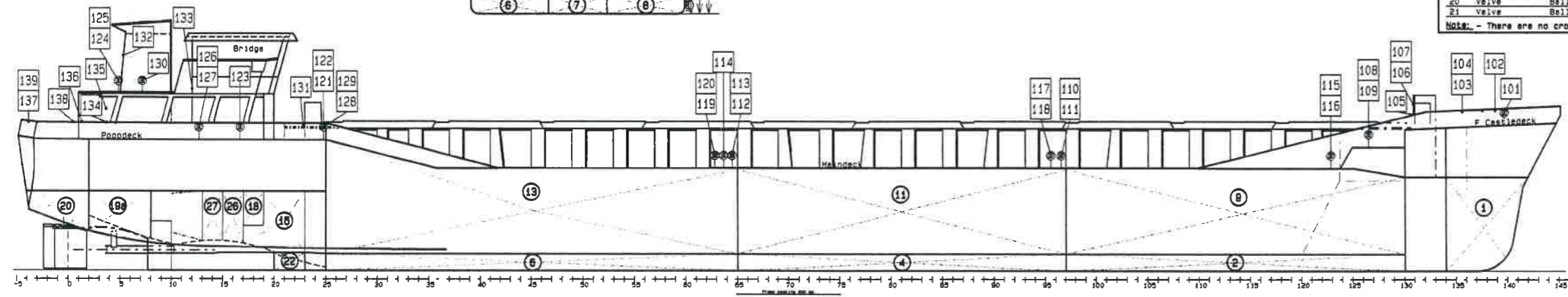


No.	Position	Use on board	Type opening	Sill height	Closing type
<b>Roopdeck</b>					
334	Entr. Emerg. Gen. R.	Permanent Closed	Watertight	690 mm	Manually
335	Entr. Engine R.	Used	Watertight	750 mm	Manually
336	Entr. Fanroom	Permanent Closed	Watertight	750 mm	Manually
337	Entr. Accommodation Used	Used	Watertight	700 mm	Manually
338	Escape Eng. R.	Permanent Closed	Watertight	750 mm	Manually
339	Entr. Hold aft.	Permanent Closed	Watertight	750 mm	Manually
340	Entr. Deckstore	Normal Closed	Watertight	750 mm	Manually
343	Hatch Engine R.	Permanent Closed	Watertight	690 mm	Manually
344	Hatch Co2 Room	Permanent Closed	Watertight	750 mm	Manually
345	Hatch Escape Acc.	Permanent Closed	Watertight	750 mm	Manually
<b>Forecastle deck</b>					
341	Entr. Forecastle	Normal Closed	Watertight	665 mm	Manually
342	Entr. Boatwinch.	Normal Closed	Watertight	*** mm	Manually
346	Hatch Boatwinch.	Permanent Closed	Watertight	1250 mm	Manually
347	Hatch ropes	Permanent Closed	Watertight	900 mm	Manually

No.	Description	Capacity	Control pos.
<b>Ballast system</b>			
A	Ballastpump	140 m <sup>3</sup> /h	Top Eng. R. fr21-22
B	Ballastpump	140 m <sup>3</sup> /h	Top Eng. R. fr21-22
No.	Description	Use on board	Control pos.
1	Valve	Ballastline	Top Eng. R. fr21-22
2	Valve	Ballastline	Top Eng. R. fr21-22
3	Valve	Ballastline	Top Eng. R. fr21-22
4	Valve	Ballastline	Top Eng. R. fr21-22
5	Valve	Ballastline	Top Eng. R. fr21-22
6	Valve	Ballastline	Top Eng. R. fr21-22
7	Valve	Ballastline	Top Eng. R. fr21-22
8	Valve	Ballastline	Top Eng. R. fr21-22
9	Valve	Ballastline	Top Eng. R. fr21-22
10	Valve	Ballastline	Top Eng. R. fr21-22
11	Valve	Ballastline	Top Eng. R. fr21-22
12	Valve	Ballastline	Top Eng. R. fr21-22
13	Valve	Ballastline	Top Eng. R. fr21-22
14	Valve	Ballastline	Top Eng. R. fr21-22
15	Valve	Ballastline	Top Eng. R. fr21-22
16	Valve	Ballastline	Top Eng. R. fr21-22
17	Valve	Ballastline	Top Eng. R. fr21-22
18	Valve	Ballastline	Top Eng. R. fr21-22
19	Valve	Ballastline	Top Eng. R. fr21-22
20	Valve	Ballastline	Top Eng. R. fr21-22
21	Valve	Ballastline	Top Eng. R. fr21-22

Note: - There are no cross flooding pipes between ballasttanks

No.	Tank name	Location	Contents	Cap. m <sup>3</sup>
1	Forepeak	134-fwd	Ballastwater	57
2	DB Tank 1 SB	97-130	Ballastwater	103
3	DB Tank 1 PS	97-130	Ballastwater	103
4	DB Tank 2 SB	65-97	Ballastwater	116
5	DB Tank 2 PS	65-97	Ballastwater	116
6	DB Tank 3 SB	27-65	Fuel Oil	93
7	DB Tank 3 PS	27-65	Ballastwater	93
8	DB Tank 3 PS	27-65	Fuel Oil	93
9	Sidetank 1 SB	97-130	Ballastwater	105
10	Sidetank 1 PS	97-130	Ballastwater	105
11	Sidetank 2 SB	65-97	Ballastwater	109
12	Sidetank 2 PS	65-97	Ballastwater	109
13	Sidetank 3 SB	27-65	Ballastwater	142
14	Sidetank 3 PS	27-65	Ballastwater	142
15	Sidetank ER SB	17-23	Fuel Oil	27
16	Sidetank ER PS	13-21	Fuel Oil	26
17	Sidetank ER PS	13-21	Fuel Oil	26
18	Lub. oil storage	17-19	Lub. oil	3.5
19a	Tunnel tank SB	2-10	Potablewater	29
19b	Tunnel tank PS	2-10	Potablewater	29
20	ATP tank SB	Aft-13	Ballastwater	44
21	ATP tank PS	Aft-13	Ballastwater	44
22	Dirty Oil tank	20-23	Dirty oil	3
23	Dirty water tank	20-13	Dirty water	7
24	Daytank (foreship)	11-19	Fueloil	4
25	Daytank Emerg. Gen.	15-21	Fueloil	1
26	Daytank 1	15-21	Fueloil	9
27	Daytank 2	13-15	Fueloil	6



No.	Description	Frame	Sill height	Closing type
<b>Forecastledeck (8.30 m above base)</b>				
101	Dear Forepeak In	139.7	760 mm	Selecting
102	Vent. Boatwinch out	139.8	690 mm	Manually
103	Vent. Boatwinch in	139.8	690 mm	Manually
104	Vent. Paints	135.6	690 mm	Manually
105	Vent. Hold fwd	130.8	800 mm	Manually
106	Vent. Bowcomp. R out	130.8	1500 mm	Manually
107	Vent. Bowcomp. R in	130.8	1500 mm	Manually
<b>Maindeck (6.00 m above base)</b>				
108	Dear DB tk2 SB	125.5	760 mm	Selecting
109	Dear DB tk2 PS	125.5	760 mm	Selecting
110	Dear DB tk4 SB	95.5	760 mm	Selecting
111	Dear DB tk4 PS	95.5	760 mm	Selecting
112	Dear DB tk6 SB	64.5	760 mm	Selecting
113	Dear DB tk6 PS	64.5	760 mm	Selecting
114	Dear DB tk8 PS	63.7	760 mm	Selecting
115	Dear Side tk10 SB	125.8	760 mm	Selecting
116	Dear Side tk10 PS	125.8	760 mm	Selecting
117	Dear Side tk11 SB	95.5	760 mm	Selecting
118	Dear Side tk12 PS	95.5	760 mm	Selecting
119	Dear Side tk13 SB	63.5	760 mm	Selecting
120	Dear Side tk14 PS	62.8	760 mm	Selecting
<b>Roopdeck (7.65 m above base)</b>				
121	Dear Side tk15 SB	24.8	870 mm	Selecting
122	Dear Side tk15 PS	24.8	870 mm	Selecting
123	Dear Lub. Oil tk18 SB	16.7	760 mm	Selecting
124	Dear Tunneltk19 SB	4.8	760 mm	Selecting
125	Dear Tunneltk19 PS	4.8	760 mm	Selecting
126	Dear ATP tk20 SB	12.7	760 mm	Selecting
127	Dear ATP tk21 PS	12.7	760 mm	Selecting
128	Dear Dirty Oil tk22	24.9	850 mm	Selecting
129	Dear Dirty Oil tk23	24.8	850 mm	Selecting
130	60 tank Emerg. Gen.	7.2	760 mm	Selecting
131	Vent. Hold aft	22.8	900 mm	Manually
132	Vent. Eng. R. overcr.	5.3	4900 mm	Manually
133	Vent. Eng. R. supply	12.0	3010 mm	Manually
134	Vent. Emerg. Gen. R. ex.	3.7	1020 mm	Manually
135	Vent. Emerg. Gen. R. su.	3.7	1010 mm	Manually
136	Vent. Co2R. exhaust	1.3	1025 mm	Manually
137	Vent. Co2R. supply	-3.8	1035 mm	Manually
138	Vent. Steer. G. R. in	0.3	1035 mm	Manually
139	Vent. Steer. G. R. out	-3.8	1035 mm	Manually

General Note:  
 In case of damage, the follow actions need to be taken:  
 - Check the position and safety of all persons on board.  
 - Verify if all doors and hatches were closed, whereby intact compartments can be flooded.  
 - Determination the damage area, by sounding tanks and compartments.  
 - Restrict the damage area, by closing valves.  
 - If possible, try to counter ballasting the ship (with care in respect to loss of stability)

ACCEPTED ON BEHALF OF THE FLAG OF  
**LATVIA**  
 AT THE TIME OF CHANGE OF FLAG BASED  
 ON THE APPROVAL FROM/ON BEHALF OF  
**EMUNA** Aldebaars  
 IMO NR: 9238387  
**PBCB**  
 AT AMSTERDAM  
 11/02/2021  
 Main Particulars  
 Length over all 89.99 m  
 Length between perpendiculars 84.99 m  
 Breadth (moulded) 12.50 m  
 Depth 6.00 m  
 Draft (moulded) 4.64 m



SHIPYARD  
**BARKMEIJER STROOBOS**  
 HELLINGSTRAAT 10 9872 PT STROOBOS THE NETHERLANDS  
 TEL: 0512 351201 FAX: 0512 352495

CONSHIP  
 CONSHIP INTERNATIONAL B.V. - P.O. BOX 8029  
 GRONINGEN - THE NETHERLANDS

Damage Control Plan

SCALE: 1:150 DATE: 25-08-03 YARD NO: 296 DRAWING NO: 029 SHEET:  
 DRAWN BY: W. Metz